

Annual Financial Report 2016



Contents

SECTION	PAGE
Acronyms & Abbreviations	3
Organisation Information	4
Summary of Significant Accounting Policies	5
CONSOLIDATED RESULTS	
Executive Summary	6
The 2016 Snapshot	7
Top 10 Donors	8
Unrestricted Funds	8
Consolidated Financial Statements 2016	9
Social Business Results	12
Social Businesses by Program: Financial Reports	
Social Business Financial Statements 2016	
Financial Sustainability	16
HEADQUARTERS & FRIENDS PHNOM PENH	
Snapshot Summary	17
FI Headquarters Financial Statements 2016	18
MITH SAMLANH	
Snapshot Summary	22
Mith Samlanh Financial Statements 2016	23
FRIENDS SIEM REAP	
Snapshot Summary	28
Friends Siem Reap Financial Statements 2016	29
FRIENDS LAOS	
Snapshot Summary	33
Friends Laos Financial Statements 2016	34
FRIENDS THAILAND	
Snapshot Summary	39
Friends Thailand Financial Statements 2016	40
FRIENDS INDONESIA	
Snapshot Summary	45
Friends Indonesia Financial Statements 2016	46
Annual Budget 2017	
Annual Budget 2017	50

Acronyms & Abbreviations

3PC	Partnership Program for the Protection of Children
Adcom	Advisory Committee
Aran	Aranyaprathet
CYTI	Children and Youth Together, Innovating
DfAT	Australian Department of Foreign Affairs & Trade
EU	European Union
FACE	Fight Against Child Exploitation Foundation
FI	Friends-International
FnS	Friends 'n' Stuff
GFATM	Global Fund Fight Against Aids, Tuberculosis & Malaria
HBP	Home-Based Production
HQ	Headquarters
IEC	Information, Education, Communication (Materials)
MS	Mith Samlanh
NCHADs	National Centre for HIV/AIDs, Dermatology, and Sexually Transmitted Diseases
NGO	Non-Governmental Organisation
TREE	Training Restaurants for Employment & Entrepreneurship
UNICEF	United Nations Children's Fund
USAID	United States Agency for International Development

Organisation Information (at 31 Dec 2016)

Board of Directors

Wilfried Schneider - Chairperson

Len Coster - Treasurer

Birgit Aßmann – Member

Vivian Gee - Member

Michael Gilmore – Member

Honorary Members

Denis Marot

Winston Mc Colgan

Executive Director / Founder

Sebastien Marot

Management Team

Kanchan Kapoor – Head of Finance, Human Resources & Grants. Deputy Director

Nikolai Schwarz – Head of Social Business

Sebastien Le Mouellic – Head of Partnerships & Technical Support

Ampor Sam-Oeun – Program Director – Friends Siem Reap, Cambodia

Ari Widodo- Program Director Friends Indonesia

Ketsone Philaphandet - Program Director - Friends Laos

Map Somaya – Program Director – Mith Samlanh Phnom Penh, Cambodia

Orawan Saowapat – Interim Program Director - Friends Thailand

Auditors

KPMG Cambodia Ltd

KPMG Lao Company Ltd

KPMG (Thailand) Phoomchai Audit Ltd

Achmad, Rasyid, Hisbullah & Jerry Registered Public Accountants – Indonesia

[Audited financial statements are available on our website]

Registered Office

Operational Headquarters: #89B, Street 103, PO Box 597, Phnom Penh, Cambodia

Legal Headquarters: Friends-International France, 29 Rue Vaneau 75007, Paris, France

Registration

Prefecture De Police, Paris, France. 19 July 1995

W751121526

Summary of Significant Accounting Policies

Friends adopts the following accounting policies in the preparation of its financial statements.

Basis of Preparation

The financial statements are expressed in the presentational currency - the US\$, and are prepared in accordance with a modified cash basis of accounting. Under this basis of accounting, income is recognized when funds are received rather than when they are 'earned' and expenditure is recognized when payments are made rather than when they are incurred, except for the following treatment:

- Advances are initially recognized as a current asset in the Balance Sheet, until liquidation with supporting documents, at which point they are recognized as expenses in the Statement of Income and Expenses.
- Deposits to suppliers, loans to staff and other advances are recorded as Accounts Receivables in the Balance Sheet until these balances are settled.
- Salary tax payable withheld from staff salaries are recorded as Income Tax Payable in the Balance Sheet until payments have been made to relevant tax authorities
- The costs of fixed assets are charged to expenses upon acquisition. For control and management purposes, a fixed asset register is maintained.

Foreign Currency Translation

FI executes transactions primarily in local currency of each program office. Functional currencies are as follows:

	PRIMARY CURRENCY	SECONDARY CURRENCY
Cambodia	US\$	KHR (Khmer Riel)
Laos	LAK (Lao Kip)	US\$
Thailand	THB (Thai Baht)	N/A
Indonesia	IDR (Indonesian Rupiah)	N/A

In 2016 each program office maintained its records in their primary currency. Transactions in currencies other than the primary currency are converted into the primary currency at the rate of exchange prevailing on the transaction dates. Exchange differences are recognized in the Statement of Income and Expenses.

Executive Summary

2016 was perhaps the most difficult year financially seen in Friends' history. Almost \$1m of funding shortages was supported through social business profits, unrestricted donations, emergency supporters, and soft loans from friends of Friends. Through perseverance and resilience, Friends made it through an incredibly challenging year, but not without closing unfunded projects and making staff redundancies.

Both income and expenditure reduced by 3% (approx. \$225,000) while the number of staff by 12% (80 staff). Contractual funding was down by \$381,000 (-9%). Most hard hit were Mith Samlanh with donor funding down by 24% from 2015; \$394,000, Headquarters down by \$471,000 (-20%), Friends Siem Reap by \$98,000 (-17%) and Friends Laos by \$54,000 (-13%).

Regardless, Friends managed to acquire new funding donors in 2016; Cambodia Children Support Foundation, EPIC, Save the Children [in collaboration with USAID], SGS, Spellbrook Foundation, Intermarché, Philanthropy Advisors, and TSA Solutions. New contract funds amounted to 4% of total income.

Total expenses in 2016 decreased by \$227,700 to \$7,776,000. Social business spending comprised of 42%, against social services at 46%. Administration costs remained low at 4% and Grants Development & Fundraising was 2%. Friends provided small grants to ChildSafe Alliance external partners amounting to \$364,000 (5%). While some costs reduced by natural circumstances from the preceding year, such as reduced project audits, reduced needs for vehicle/ equipment purchases etc., other cost reductions were by way of necessity; particularly direct project costs and service provision. Various community remedial classes, Camp Sabay, Sabay, transitional homes had to be closed. The Wise Bird mobile bus services were discontinued, and in other cases whole projects were closed or significantly scaled down

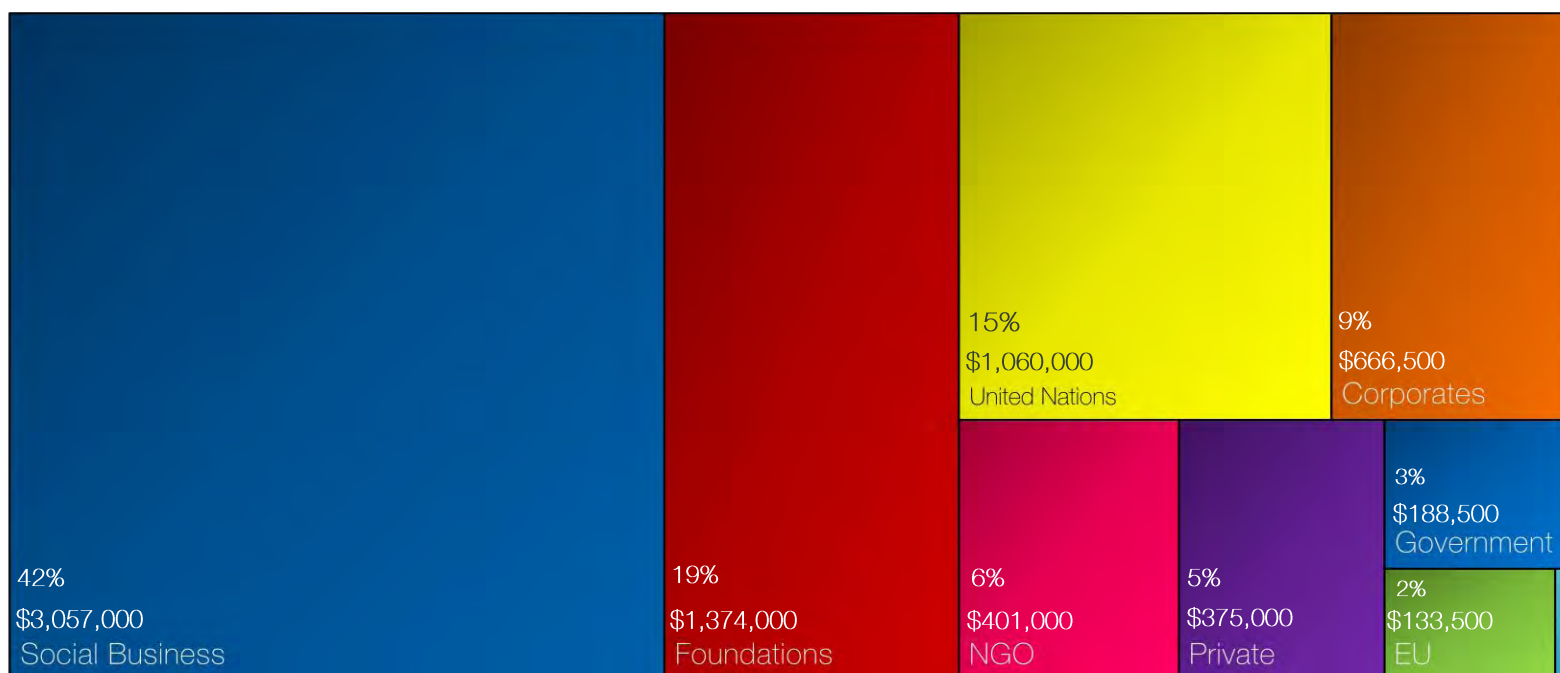
Social Business revenue increased by 9% from 2015, and net profit by 62%. Social businesses supported the program services with \$630,500; more than double the amount of net profit generated in the year. The largest profit was generated by the Phnom Penh Street 13 Friends n Stuff; \$150,000, followed by Friends the Restaurant; \$142,000. Marum restaurant significantly reduced its losses to -\$10,000. The TREE franchise expanded with new additions: Bahir Zaf in Ethiopia, Sanon in Myanmar, Nyum Nyum in Siem Reap, and Khanun in Bangkok. Sustainability ratios improved from 4% to 6%, however, the reduction in program expenses also contributes to the improved ratio results.

2017 will continue to see expenses at a reduced level and are foreseen to be approximately \$7,100,000, of which social business costs (self-funded) are estimated to be 37%. The funding gap at 30 April 2017, for social services is 13% (\$577,000).

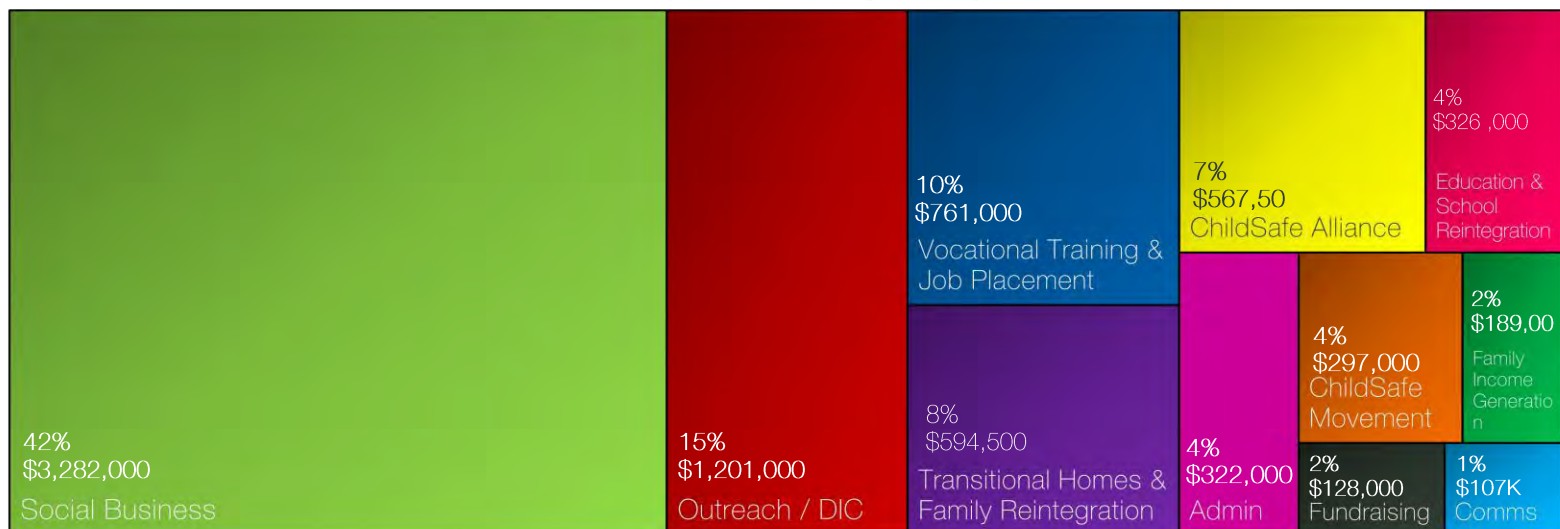
The 2016 Snapshot

	2016		2015
Number of Staff (31 Dec)	552	↻ -12%	630
Total Income	\$7,263,325	↻ -3%	\$7,484,670
Total Expenses	\$7,775,678	↻ -3%	\$8,003,376
Administration	4%	↻ -8%	5%
# of Social Businesses	31	↻ 3%	30

Our Income Sources



Our Expenses by Project



Top 10 Donors

#	DONOR NAME	2016 INCOME	2015 INCOME
1	UNICEF (Cambodia & Thailand)	\$1,059,717	\$846,675
2	Fossil Foundation	\$320,000	\$80,000
3	Tides Foundation	\$200,000	\$0
4	Fondation Juniclair	\$173,979	\$120,080
5	WISE (Eric Barthelmé & Swiss Philanthropy Foundation)	\$165,959	\$164,955
6	Firetree Asia Foundation	\$150,000	\$14,973
7	Terre Des Hommes Netherlands	\$134,281	\$151,369
8	European Union	\$133,471	\$239,652
9	Gisela Foundation	\$129,464	\$123,631
10	GFATM / NCHADS	\$116,070	\$361,309

Unrestricted Funds

Friends strives to build its unrestricted funds to ensure no activities are obstructed due to lack of funding. These unrestricted funds have allowed for the below activities to continue unhindered in 2016. These funds are comprised of: private donations, social business reserves and other miscellaneous income.

PROJECT	Headquarters	Friends Phnom Penh	Mith Samlanh	Friends Siem Reap	Friends Laos	Friends Thailand	Friends Indonesia	TOTAL
Education & School			\$51,151	\$13,119				\$64,270
Culture			\$29,565					\$29,565
Family Income Generation			\$19,117	\$2,239	\$70			\$21,426
Outreach / Drop in Centres	\$1,012	\$22,272	\$132,353	\$16,348	\$3,724			\$175,708
Family Reintegration			\$156,469	\$33,227	\$10,613			\$200,309
Vocational Training & Jobs			\$63,856	\$9,341	\$1,081			\$74,278
Communities (Andong, Takhmao)			\$98,742					\$98,742
Drugs (Outreach, Detox Centre)			\$76,652					\$76,652
ChildSafe Alliance	\$25,897							\$25,897
ChildSafe Movement				\$2,896	\$2,797			\$5,693
Administration				\$10,223	\$12,064			\$22,287
Core Program costs			\$53,350	\$41,196	\$19,280	\$16,244	\$815	\$130,885
Fundraising	\$16,006							\$16,006
TOTAL	\$42,915	\$22,272	\$681,255	\$128,589	\$49,629	\$16,244	\$815	\$941,717

Consolidated Financial Statements

Income Statement

For the year ending 31 Dec 2016

Friends-International & Mith Samlanh

INCOME	2016 (US\$)	2015 (US\$)
Sales Revenue	2,871,085	2,638,065
Donor Funding	3,926,028	4,306,806
Private Donations	352,779	333,960
Consultancy	39,921	91,403
Other Income	36,897	34,389
Franchise Revenue	36,614	80,048
TOTAL INCOME	7,263,325	7,484,670
EXPENSES	2016 (US\$)	2015 (US\$)
PERSONNEL		
International Staff	938,811	905,133
National Staff	2,970,724	2,656,342
Health Insurance	89,174	85,607
Consultancies / Professional fees	54,513	105,101
Overtime	52,718	60,858
Miscellaneous	22,705	25,039
	4,128,645	3,838,080
DIRECT COSTS		
Hygiene Costs	12,148	23,815
Medical Costs	70,838	149,987
IEC Materials	3,979	6,679
Clothing for beneficiaries	8,600	13,244
Non-Formal Education materials	17,603	31,724
Food/Drink for Beneficiaries	212,266	249,893
Family Support	22,200	48,326
Harm Reduction Materials	76,023	46,197
Centre Supplies	25,359	30,576
Other Activity Costs	6,312	10,073
Family Reintegration Travel	30,173	36,023
Recreational Activity Support	10,078	13,477
Outreach Materials	5,018	4,891
School Reintegration Support	45,698	61,596
Vocational Training Materials	67,292	38,070
Job Placement Support	61,878	79,093
ChildSafe Materials	36,711	38,360
Foster Care Families	56,444	50,777
Staff Uniforms	4,202	13,158
Family Income Generation Support	24,552	54,961
	797,373	1,000,920
EQUIPMENT / ASSETS		
IT / Computers	24,551	40,866
Vehicles	1,450	46,107

EXPENSES	2016 (US\$)	2015 (US\$)
Furniture / Fittings	6,462	13,213
Vocational Training Equipment	27,958	29,062
Miscellaneous	9,992	15,523
	70,413	144,771
INDIRECT COSTS		
Communications	54,212	57,001
Transport / Gasoline	116,332	158,791
Maintenance / Renovations	187,057	163,457
Office Supplies	75,957	84,406
Rent	317,624	306,474
Utilities	135,123	137,882
External Audits	32,132	59,130
Vehicle / Building Insurance	16,771	16,199
Advertising Marketing	35,663	60,696
Miscellaneous	111,008	75,707
	1,081,878	1,119,742
TRAINING / COORDINATION		
Travel Costs	128,864	145,271
Staff Training	13,902	22,164
Workshops / Research / Assessments	41,026	42,979
Board / Adcom Meetings / Conferences	10,743	14,924
	194,536	225,339
OTHER BUSINESS COST		
Cost of Sales	998,002	1,099,028
Outlet Supplies	53,732	84,244
Staff Food costs	66,416	61,787
Business Uniforms	17,019	19,426
Miscellaneous	3,880	3,235
	1,139,050	1,267,720
CHILDSAFE ALLIANCE- SUB-GRANTS		
Damnok Toek (DT)	73,281	58,370
Komar Rikreay (KMR)	40,874	81,362
M'lop Tapang (MT)	142,854	142,003
Samathapheap Khnom Organisation (SKO)	14,778	20,924
Transcultural Psychosocial Organisation (TPO)	20,248	18,285
Cambodia Children's Trust (CCT)	27,540	13,785
Krousar Thmey (KT)	37,699	13,268
Children In Families (CIF)	5,000	14,821
M'lop Russey Organisation (MRO)	973	18,463
Association Mondiale des Amis De l'Enfance (AMADE)	536	7,786
Operations Enfants du Cambodge (OEC)	0	5,327
Phare Ponleu Selpak (PPS)	0	6,498
Legal Aid Cambodia (LAC)	0	5,909
	363,783	406,803
TOTAL EXPENSES	7,775,678	8,003,376
NET INCOME	-512,353	-518,706
Retained funds b/f	4,081,851	4,600,557
EQUITY	3,569,498	4,081,851

Statement of Financial Position

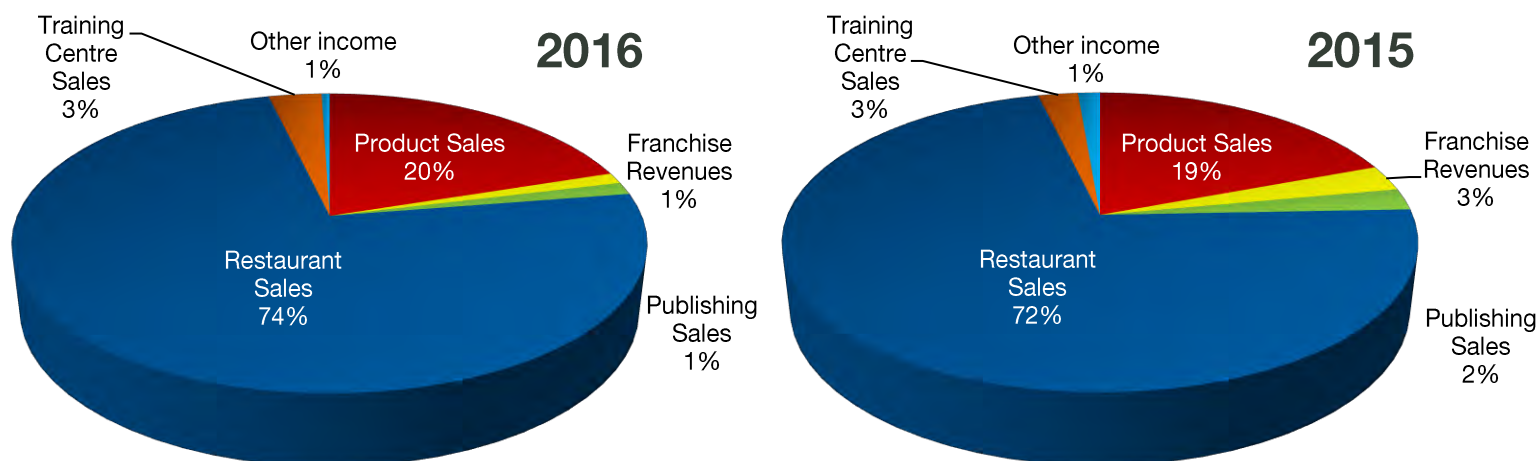
as at 31 Dec 2016

Friends-International & Mith Samlanh

CURRENT ASSETS	2016 (US\$)	2015 (US\$)
Non-Current Assets		
Land & Buildings	2,826,900	2,826,900
Current Assets		
Cash & Bank	885,567	998,010
Project Advances	4,498	88,595
Sub-Contractee Advances	-5,564	17,521
Prepayments	35,700	81,306
Accounts Receivable		
Accounts Receivables	74,209	139,815
Staff Loans	6,343	24,635
Health Insurance	4,515	8,757
Guarantee Deposit	31,463	35,939
TOTAL ASSETS	3,863,630	4,221,478
LIABILITIES		
Current Liabilities		
Accounts Payables	285,738	131,815
Tax Payable	6,414	5,664
Withholding Tax	884	1,331
Social Security Payable	1,096	817
TOTAL LIABILITIES	294,132	139,627
EQUITY	3,569,498	4,081,851

Social Business Results

Sales Revenue Composition



6 restaurants generated 74% of the total business income with \$2.3m in sales. Friends the Restaurant alone contributed 37%, while both the Phnom Penh restaurants collectively generated 65% to the sales income. The Siem Reap restaurants (Marum and the new Nyum Nyum caretaker training restaurant) contributed 18%, and the 2 Laos restaurants brought in 17% of the total sales revenue. Friends the Restaurant had the highest profit margin of 17%. Makphet had the greatest loss of \$38,800, similar to 2015 and Marum made a loss of \$10,400, an improvement from 2015. The TREE franchise brought in a net profit of \$6,400 from revenues of over \$261K. TREE revenues were from 8 TREE restaurants; Friends the Restaurant, Romdeng, Makphet, Khaiphaen, Sandan, Marum, Bahir Zaf and Sanon.

RESTAURANTS	TREE Franchise	Makphet Restaurant	Khaiphaen Restaurant	Marum Restaurant	Nyum Nyum Restaurant	Friends the Restaurant	Romdeng Restaurant
SALES REVENUE							
Franchise Revenues	261,230	0	0	0	0	0	0
Publishing Sales	0	0	0	0	0	0	0
Restaurant Sales	0	250,128	137,021	423,503	2,738	846,203	654,302
Other income	0	368	174	3,764	0	1,756	1,995
Total Revenues	261,230	250,496	137,196	427,267	2,738	847,959	656,298
EXPENSES							
Cost of Sales	0	92,709	45,843	152,818	2,324	292,324	205,167
Personnel	189,656	88,439	59,886	142,109	0	217,077	197,033
Running Costs	15,873	80,384	43,084	98,789	496	108,923	116,506
Travel Costs	47,600	0	0	0	0	0	0
Equipment	1,647	2,789	1,281	1,275	0	3,434	3,103
Franchise Fee	0	25,013	6,875	42,677	0	84,620	65,430
Total Expenses	254,776	289,335	156,969	437,668	2,820	706,378	587,240
NET PROFIT	6,454	-38,838	-19,774	-10,401	-81	141,581	69,058

In 2016, Friends had 8 Friends 'n' Stuff retail outlets, after 2 closure at the Phra Athit pier in Bangkok, and the Russian Market branch in Phnom Penh. The collective Friends 'n' Stuff outlets brought in almost \$480K in sales revenue and \$170K in net profit; a 35% profit margin. The highest revenues and profits were generated by Friends 'n' Stuff, Street 13 in Phnom Penh.

FRIENDS 'n' STUFF	FnS in Vientiane	FnS in Luang Prabang	FnS in Siem Reap	FnS in Bangkok	FnS in Phnom Penh
SALES REVENUE					
Product Sales	18,293	4,793	128,735	11,852	392,689
Publishing Sales	740	70	6,308	207	12,547
Other income	15	0	2,468	0	1,324
Total Revenues	19,047	4,863	137,511	12,059	406,560
EXPENSES					
Cost of Sales	8,835	2,855	76,027	3,521	172,100
Personnel	9,051	1,688	33,336	8,098	44,142
Running Costs	7,416	109	6,836	6,943	27,814
Equipment	954	0	301	0	669
Total Expenses	26,256	4,652	116,500	18,561	244,724
NET PROFIT	-7,209	211	21,010	-6,502	161,836

The number of decentralised Vocational Trainings increased now standing at a total of 8 workshops across 3 major cities along with 7 centralised workshops, collectively generating over \$93K in sales revenue and net profit of over \$4,800.

VOCATIONAL TRAINING WORKSHOPS	Mechanics Vientiane	Sewing Workshop Siem Reap	Sewing Training Siem Reap	Phka Kravan - Beauty Salon Siem Reap	Mechanics Siem Reap	Nailbar Chom Chao	Nailbar Phnom Penh	Bousi Reakrey Mechanics Takhmao	Kse Meth Sewing Andong	Training Centre Phnom Penh
SALES REVENUE										
Training Centre Sales	5,155	19,010	7,014	3,529	8,182	249	18,131	5,273	2,774	23,339
Other income	5	471	0	0	0	0	0	0	0	0
Total Revenues	5,160	19,480	7,014	3,529	8,182	249	18,131	5,273	2,774	23,339
							18,131.45			
EXPENSES										
Cost of Sales	3,642	5,748	6,920	1,387	6,418	96	1,701	3,354	1,352	14,714
Personnel	5,432	13,310	0	833	0	0	5,336	1,533	112	0
Running Costs	3,417	1,082	0	1,841	126	488	5,120	62	3,133	715
	0	175	0	0	0	0	189	0	0	50
Total Expenses	12,491	20,315	6,920	4,061	6,544	584	12,346	4,949	4,597	15,479
NET PROFIT	-7,331	-834	94	-532	1,638	-335	5,785	325	-1,823	7,860

Social Businesses by Program - Financial Reports

	FI HQ	Friends Lao PDR	Friends Siem Reap	Friends Bangkok	Mith Samlanh	CONSOLIDATED*
SALES REVENUE						
Product Sales	170,233	23,085	128,735	11,852	392,689	627,531
Franchise Revenues	261,230	0	0	0	0	36,614
Publishing Sales	25,573	810	6,308	207	24,878	41,531
Restaurant Sales	0	387,150	426,241	0	1,500,506	2,313,896
Training Centre Sales	0	13,201	37,735	0	49,766	100,702
Other income	3,255	562	6,702	0	5,075	15,595
Total Revenues	460,291	424,807	605,721	12,059	1,972,914	3,135,869
EXPENSES						
Cost of Sales	64,028	156,615	251,643	3,521	690,808	1,051,308
Personnel	329,649	164,496	189,588	8,098	465,231	1,157,062
Running Costs	28,312	136,372	109,171	6,943	264,832	545,628
Travel Costs	51,503	0	0	0	0	51,503
Equipment	2,870	5,024	1,750	0	7,445	17,090
Franchise Fee	0	31,888	42,677	0	150,051	0
Total Expenses	476,362	494,395	594,828	18,561	1,578,367	2,822,590
NET PROFIT	-16,071	-69,588	10,893	-6,502	394,547	313,279
Program Support	0	-890	-1,494	-274	-627,905	-630,563
Opening Balance	214,312	12,609	-92,770	-3,981	355,357	485,527
NET FUND BALANCE	198,241	-57,869	-83,372	-10,758	122,000	168,242

* Intra- sales and purchases have been eliminated

Consolidated Social Businesses

Income Statement
for the year ended 31 Dec 2016
Friends-International & Mith Samlanh

	2016	2015
REVENUES		
HBP Sales	627,531	560,970
Franchise Revenues	36,614	80,048
Publishing Sales	41,531	67,298
Restaurant Sales	2,313,896	2,087,143
Training Centre Sales	100,702	70,135
Other income	15,595	38,930
Total Revenues	3,135,869	2,904,524
EXPENSES		
Cost of Sales	1,051,308	1,078,599
Personnel	1,157,062	1,012,991
Running Costs	545,628	548,182
Travel Costs	51,503	41,607
Equipment	17,090	29,487
Franchise Fees	0	
Total Expenses	2,822,590	2,710,866
NET PROFIT	313,279	193,658
Program Support	-630,563	-568,422
Opening Balance	485,527	860,291
NET FUND BALANCE	168,242	485,527

Statement of Financial Position
as at 31 Dec 2016
Friends-International & Mith Samlanh

	2016	2015
CURRENT ASSETS		
Cash in hand & bank	218,415	229,450
Staff Advances	1,700	1,758
Prepayments	35,700	77,070
Accounts Receivable	94,093	366,329
Franchise fees AR	5,482	0
Loans Receivable	0	0
TOTAL CURRENT ASSETS	355,391	674,607
CURRENT LIABILITIES		
Accounts Payable	185,334	142,322
Loans Payable	0	0
Funding Payable	1,814	46,758
TOTAL CURRENT LIABILITIES	187,149	189,081
NET EQUITY	168,242	485,526

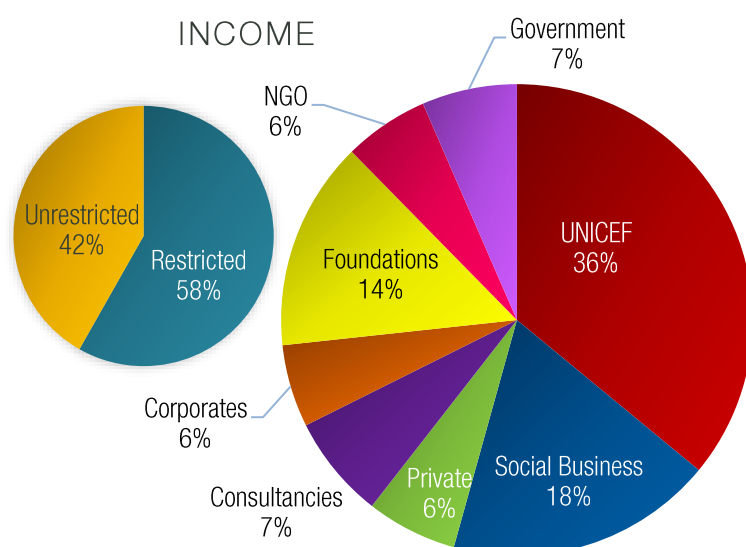
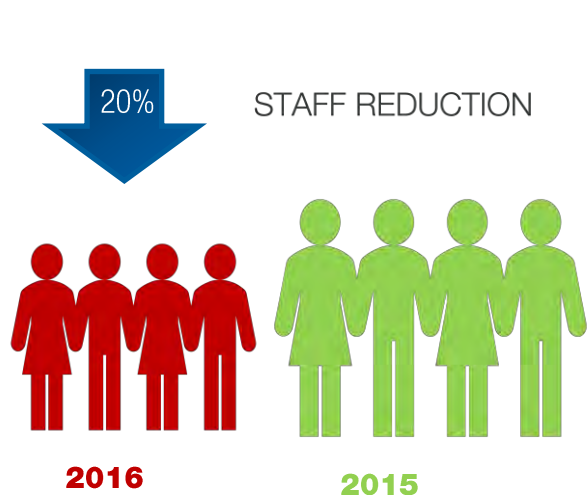
Financial Sustainability

Financial sustainability is the degree to which sales revenue is generated to absorb the full cost of activities, which is an important strategic objective for Friends; to meet the needs of its beneficiaries in the long-term.

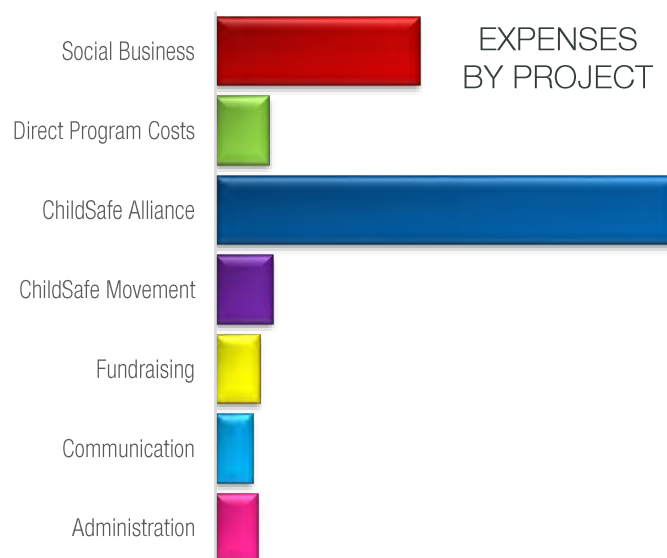
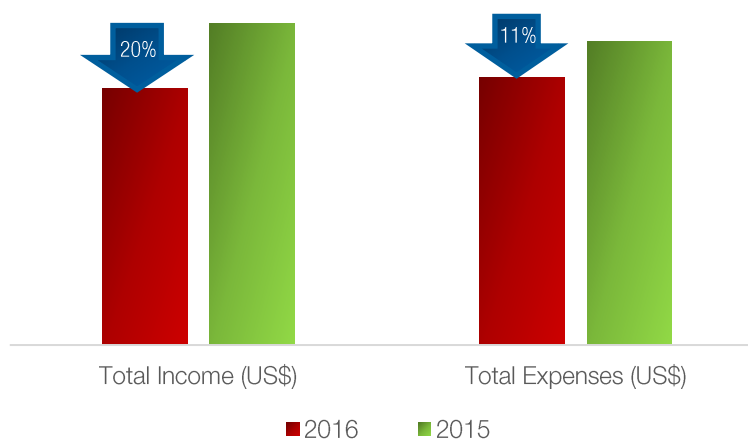
Ratio Type	Explanation	HQ		Mith Samlanh		Siem Reap		Lao PDR		Thailand		Indonesia		Total	
		2016	2015	2016	2015	2016	2015	2016	2015	2016	2015	2016	2015	2016	2015
Standard Sustainability <i>Sales Revenue</i> <i>Total Expenses</i>	<i>Sales revenue available as a percentage of total expenditure</i>	18%	17%	56%	50%	47%	41%	47%	44%	2%	6%	0%	0%	40%	36%
Social Business Sustainability <i>Sales Revenue</i> <i>Business Expenses</i>	<i>The sustainability of the collective businesses</i>	97%	96%	125%	115%	102%	95%	86%	90%	65%	136%	0%	0%	111%	107%
Social Program Sustainability <i>Business Net Profit</i> <i>Program Expenses</i>	<i>Business net profits available to support the social services (programmatic) expenditures</i>	-1%	-1%	21%	12%	2%	-3%	-17%	-10%	-1%	2%	0%	0%	6%	4%
Donor Dependency <i>100% - Social Program Sustainability</i>	<i>Friends' dependency rate on funding sources other than its social businesses</i>	101%	101%	79%	88%	98%	103%	117%	110%	101%	98%	100%	100%	94%	96%
		\$2.6m	\$3m	\$2.8m	\$3.2m	\$1.3m	\$1.3m	\$1.1m	\$1.1m	\$593K	\$501K	\$124K	\$138K	\$7.3m	\$7.7m

HQ & Friends Phnom Penh

	2016	2015
Number of Staff (31 Dec)	80	99
Total Income (US\$)	2,510,640	3,146,167
Total Expenses (US\$)	2,623,332	2,976,592
Administrative Costs	5%	5%
Social Businesses	5	5



INCOME & EXPENSE REDUCTION



Financial Statements

Income Statement for the year ending 31 December 2016 Headquarters & Friends Phnom Penh, Cambodia

INCOME	2016 (US\$)	2015 (US\$)
Sales Revenue	195,806	223,957
Donor Funding	1,861,847	2,332,994
<i>Earned Donor Income</i>	<i>775,241</i>	<i>1,900,349</i>
<i>Unearned Donor Income</i>	<i>1,086,606</i>	<i>432,542</i>
Private Donations	72,853	136,611
Consultancy	29,548	78,556
Other Income	89,356	97,602
Franchise Revenue	261,230	276,447
TOTAL INCOME	2,510,640	3,146,167
EXPENSES	2016 (US\$)	2015 (US\$)
PERSONNEL		
International Staff	813,828	784,875
National Staff	377,519	349,978
Health Insurance	13,998	11,095
Consultancies/Professional fees	29,955	60,605
Miscellaneous	12,689	13,195
	1,247,989	1,219,749
DIRECT COSTS		
Hygiene Costs	1,222	2,334
Medical Costs	2,574	29,709
IEC Materials	1,507	1,261
Food/Drink for Beneficiaries	1,260	2,143
ChildSafe Materials	6,605	4,068
Miscellaneous	7,067	3,140
	20,236	42,655
EQUIPMENT/ASSETS		
IT/Computers	3,549	21,108
Vehicles	580	1,100
Miscellaneous	1,387	1,150
	5,515	23,358
INDIRECT COSTS		
Communications	17,828	17,626
Transport/Gasoline	10,138	13,215
Maintenance/Renovations	2,595	3,529
Office Supplies	13,050	17,030
Rent & Utilities	28,260	31,885

EXPENSES	2016 (US\$)	2015 (US\$)
External Audits	6,270	18,476
Advertising/Marketing	23,527	50,782
Miscellaneous	20,506	16,898
	122,174	169,441
TRAINING / COORDINATION		
Travel Costs	108,663	119,488
Staff Training	5,530	6,267
Workshops/ Research/Assessments	11,329	17,368
Board/Adcom Meetings/ Conferences	7,405	11,890
	132,928	155,013
OTHER BUSINESS COSTS		
Cost of Sales	65,088	131,015
Miscellaneous	100	41,731
	65,188	172,746
PROGRAM SUPPORT		
Peuan Mit (Lao PDR)	7,500	22,575
Kaliyan Mith (Siem Reap)	181,835	264,115
Teman Baik (Indonesia)	0	3,800
Peuan Peuan (Thailand)	46,774	36,868
Mith Samlanh	429,410	459,470
	665,519	786,828
CHILDSAFE ALLIANCE - SUB-GRANTS		
Damnok Toek (DT)	73,281	58,370
Komar Rikreay (KMR)	40,874	81,362
M'lop Tapang (MT)	142,854	142,003
Samathapheap Khnom Organisation (SKO)	14,778	20,924
Transcultural Psychosocial Organisation (TPO)	20,248	18,285
Cambodia Children's Trust (CCT)	27,540	13,785
Krousar Thmey (KT)	37,699	13,268
M'lop Russey Organisatio (MRO)	973	18,463
Children In Families (CIF)	5,000	14,821
Association Mondiale des Amis De l'Enfance (AMADE)	536	7,786
Operations Enfants du Cambodge (OEC)	0	5,327
Phare Ponleu Selpak (PPS)	0	6,498
Legal Aid Cambodia (LAC)	0	5,909
	363,783	406,803
TOTAL EXPENSES	2,623,332	2,976,592
NET INCOME	-112,692	169,575
Retained funds b/f	803,574	633,999
EQUITY	690,882	803,574

Statement of Financial Position as at 31 Dec 2016

Headquarters & Friends Phnom Penh, Cambodia

CURRENT ASSETS		2016 (US\$)	2015 (US\$)
Current Assets			
Cash & Bank		467,951	345,719
Project Advances		2,020	85,039
Sub-Contractee Advances		-10,286	193,980
Prepayments		0	3,000
Accounts Receivable			
Program Loans		167,311	147,133
Funding Receivables		171,333	38,873
Business Receivables		161,104	115,011
Staff Loans		2,360	19,232
Health Insurance		4,515	2,394
Guarantee Deposit		700	700
Miscellaneous		22,430	30,928
TOTAL ASSETS		989,438	982,010
LIABILITIES			
Current Liabilities			
Funding Payables		287,430	119,312
Business Payables		1,521	97
Tax Payable		1,544	1,359
Miscellaneous		8,061	57,068
Withholding Tax		0	600
TOTAL LIABILITIES		298,556	178,436
EQUITY		690,882	803,574

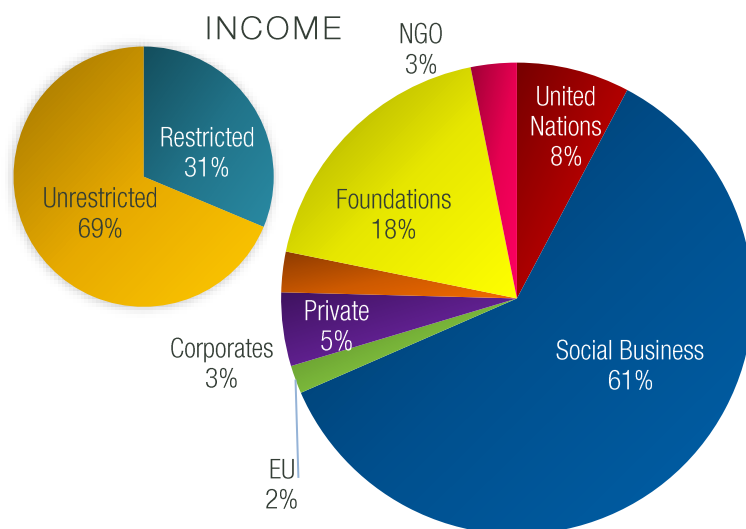
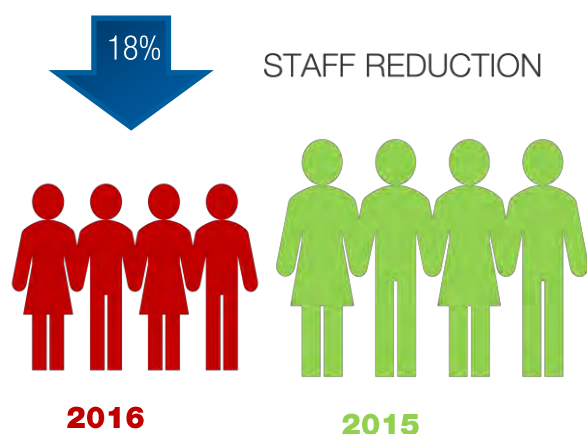
Statement of Changes in Equity as at 31 Dec 2016

Headquarters & Friends Phnom Penh, Cambodia

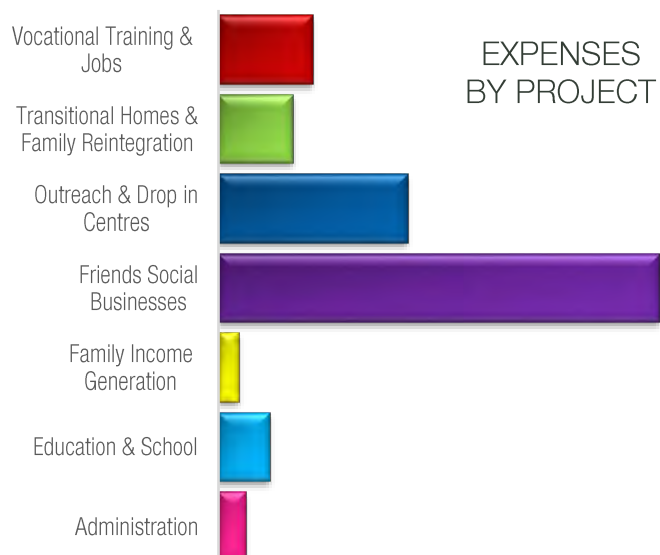
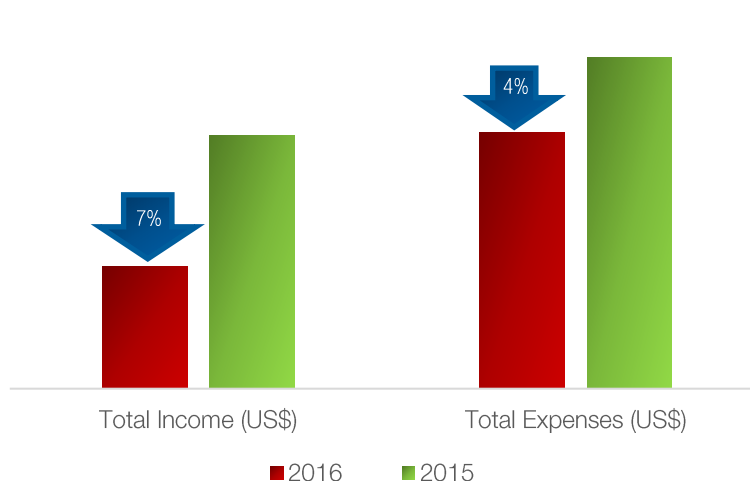
#	FUND ACCOUNT	TYPE	OPENING	INCOME	EXPENSES	SUB CONTRACTS	CLOSING
1	Exports Business	Business	-36,984	87,357	86,729	0	-36,356
2	Workshop	Business	-35,201	85,203	88,715	0	-38,712
3	Social Business Consulting	Business	3,440	928	7	0	4,361
4	Publishing Business	Business	-11,941	25,573	46,135	0	-32,502
5	TREE Alliance	Business	294,997	261,230	254,776	0	301,451
6	ChildSafe Alliance Reserves (Formerly CYTI)	Consultancy	39,733	8,092	25,897	0	21,928
7	Mith Samlanh	Consultancy	-16,082	169,907	153,825	0	0
8	Arab Gulf Fund (AGFund)	Donor	91,930	0	87,653	0	4,277
9	Columbia University	Donor	-19,447	19,447	0	0	0
10	CosmoQueen	Donor	480	0	215	0	265
11	Firetree Asia Foundation	Donor	7,575	0	7,575	0	0
12	Fondation de l'Orangerie	Donor	0	34,168	18,000	0	16,168
13	Fossil Foundation	Donor	-8,856	87,910	85,872	0	-6,818
14	Global Fund to Fight AIDS, Tuberculosis and Malaria (GFATM)	Donor	143,137	116,070	42,957	187,318	28,932
15	Orr Family Foundation	Donor	100,000	50,000	101,130	0	48,870
16	Philanthropy Advisors	Donor	0	15,276	0	0	15,276
17	Save the Children / USAID	Donor	0	12,024	4,853	0	7,171
18	Swiss Philanthropy Foundation	Donor	6,002	110,508	13,128	79,109	24,273
19	Terre Des Hommes Netherlands	Donor	58,536	134,281	51,225	134,191	7,400
20	Tides Foundation	Donor	0	200,000	19,750	0	180,250
21	Tourism Cares	Donor	8,973	0	7,217	0	1,756
22	UNICEF Cambodia	Donor	16,280	903,418	335,646	572,648	11,404
23	Work Together Foundation	Donor	109	-14	95	0	0
24	World Learning / USAID	Donor	-28,299	28,299	0	0	0
25	General Reserves	Private	188,567	156,271	156,779	55,500	131,487
26	One Plantation	Private	626	4,692	5,317	0	0
			803,574	2,510,640	1,594,030	1,029,302	690,882

Mith Samlanh

	2016	2015
Number of Staff (31 Dec)	233	283
Total Income (US\$)	3,240,261	3,495,010
Total Expenses (US\$)	3,500,846	3,649,545
Administrative Costs	3%	3%
Social Businesses	11	11



INCOME & EXPENSE REDUCTION



Financial Statements

Income Statement for the year ended 31 Dec 2016 Mith Samlanh, Phnom Penh, Cambodia

INCOME	2016 (US\$)	2015 (US\$)
Sales Revenue	1,938,807	1,834,132
Donor Funding	1,226,800	1,620,520
<i>Earned Donor Income</i>	<i>964,871</i>	<i>1,306,759</i>
<i>Unearned Donor Income</i>	<i>261,929</i>	<i>313,761</i>
Private Donations	59,629	14,490
Consultancy	468	6,730
Other Income	14,557	19,138
TOTAL INCOME	3,240,261	3,495,010
EXPENSES	2016 (US\$)	2015 (US\$)
PERSONNEL		
National Staff	1,449,672	1,271,561
Health Insurance	35,064	35,082
Consultancies/Professional fees	174,040	179,711
Miscellaneous	28,210	38,219
	1,686,985	1,524,572
DIRECT COSTS		
Hygiene Costs	3,181	7,562
Medical Costs	54,189	102,767
IEC Materials	1,664	1,188
Clothing for Beneficiaries	5,397	10,368
Non-Formal Education materials	16,480	28,544
Food/Drink for Beneficiaries	116,776	148,150
Family Support	14,100	37,318
Harm Reduction Materials	76,023	45,752
Centre Supplies	16,240	19,296
Family Reintegration Travel	22,579	21,567
Recreational Activity Support	3,760	6,435
Outreach Materials	3,932	2,212
School Reintegration Support	23,266	29,824
Vocational Training Materials	56,522	27,914
Placement Support	38,968	52,367
Foster Care Families	28,230	26,737
Staff Uniforms	2,109	2,675
Family Income Generation Support	11,742	42,040
	495,157	612,719
EQUIPMENT/ASSETS		
IT / Computers	12,923	9,795

EXPENSES	2016 (US\$)	2015 (US\$)
Vehicles	870	43,927
Furniture / Fittings	2,759	2,598
Vocational Training Equipment	8,188	18,138
Miscellaneous	4,087	8,241
	28,826	82,699
INDIRECT COSTS		
Communications	18,104	17,042
Transport/Gasoline	46,213	71,393
Maintenance/Renovations	46,502	96,474
Office Supplies	49,362	50,902
Rent & Utilities	183,329	197,922
External Audits	8,097	12,280
Advertising/Marketing	5,156	1,875
Miscellaneous	79,054	39,974
	435,817	487,861
CAPACITY BUILDING/ COORDINATION		
Staff Training	4,402	9,825
Board/ Adcom Meetings/ Conferences	316	127
	4,718	9,952
OTHER BUSINESS COST		
Cost of Sales	670,120	747,548
Outlet Supplies	6,751	21,911
Franchise Fees	150,051	134,955
Staff Food costs	22,421	18,497
Business Uniforms	0	8,831
	849,342	931,742
TOTAL EXPENSES	3,500,846	3,649,545
NET INCOME	-260,585	-154,535
Retained funds b/f	3,149,600	3,304,135
EQUITY	2,889,016	3,149,600

Statement of Financial Position as at 31 Dec 2016

Mith Samlanh, Phnom Penh, Cambodia

NON-CURRENT ASSETS		2016 (US\$)	2015 (US\$)
	Land & Buildings	2,826,900	2,826,900
CURRENT ASSETS			
Current Assets			
	Cash & Bank	185,329	291,066
	Project Advances	0	631
	Prepayments	0	2,196
Accounts Receivable			
	Funding Receivables	86,245	58,929
	Business Receivables	27,935	18,475
	Staff Loans	0	2,661
	Guarantee Deposit	2,127	5,550
TOTAL ASSETS		3,128,537	3,206,409
LIABILITIES			
Current Liabilities			
	Funding Payables	56,183	0
	Tax Payable	3,537	3,291
	Miscellaneous	159,623	53,518
	Program Loans	20,178	0
TOTAL LIABILITIES		239,521	56,809
EQUITY		2,889,016	3,149,600

Statement of Changes in Equity as at 31 Dec 2016

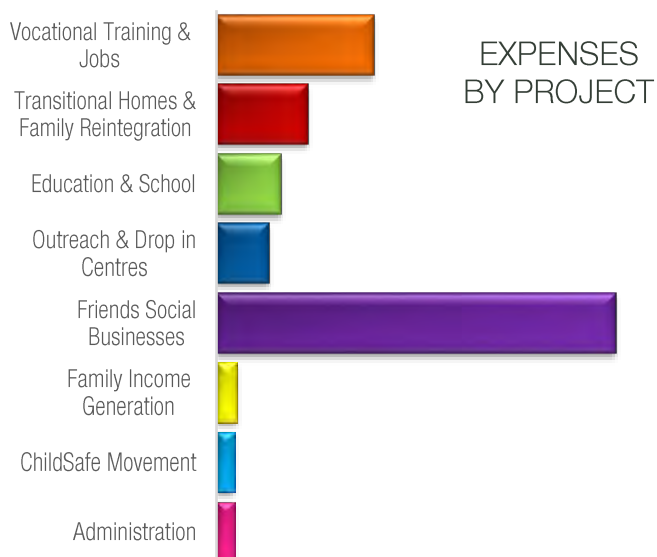
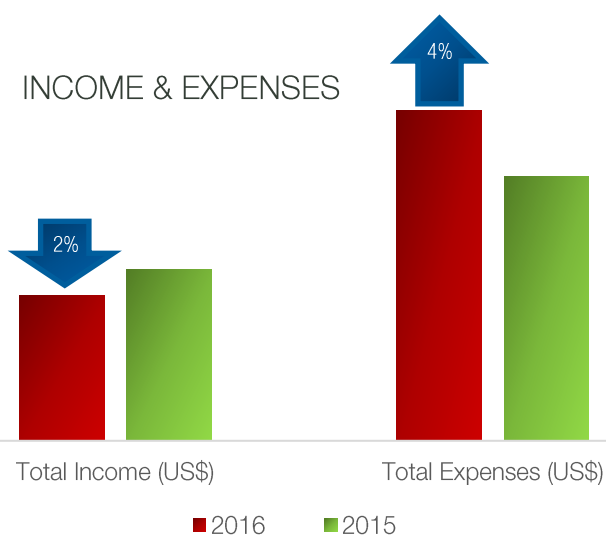
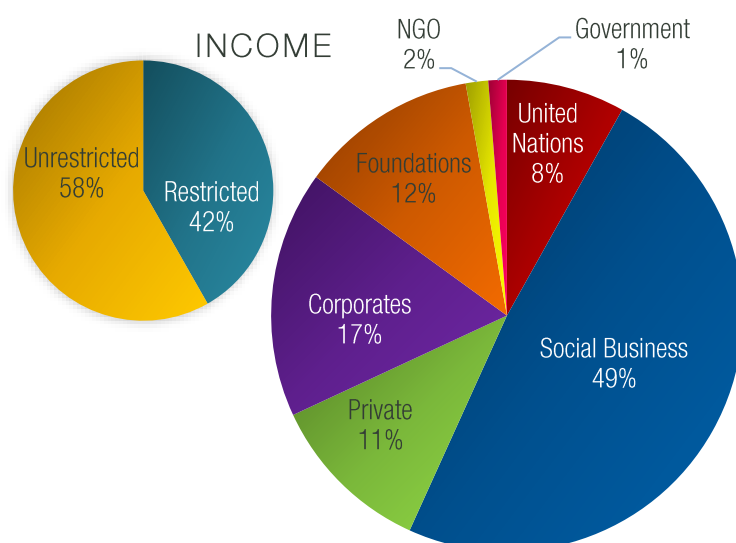
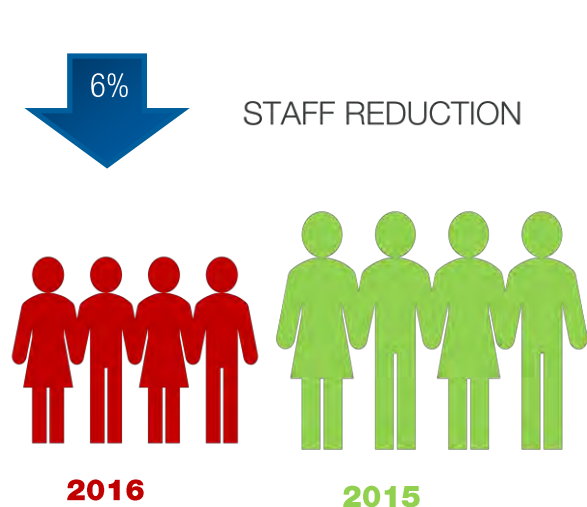
Mith Samlanh, Phnom Penh, Cambodia

#	FUND ACCOUNT	TYPE	OPENING	INCOME	EXPENSES	TRANSFER	CLOSING
1	Best of Friends Cookbook	<i>Business</i>	17,157	12,331	2,071	-25,116	2,301
2	Friends N Stuff Russian Market	<i>Business</i>	10,775	13,281	10,274	-13,782	0
3	Friends N Stuff Romdeng	<i>Business</i>	14,235	50,983	41,732	-18,837	4,648
4	Friends N Stuff St.13	<i>Business</i>	46,028	300,434	166,218	-155,728	24,516
5	Friends the Restaurant	<i>Business</i>	184,518	846,406	691,162	-287,380	52,382
6	Home-Based Production	<i>Business</i>	0	20,319	9,691	-10,409	219
7	Romdeng Restaurant	<i>Business</i>	69,470	656,298	586,537	-107,447	31,784
8	Screen Printing Workshop	<i>Business</i>	0	9,741	2,781	-6,960	0
9	VocationalIT raining Centre	<i>Business</i>	13,174	34,089	26,868	-14,246	6,149
10	Allan Murray Jones	<i>Donor</i>	0	20,000	20,000	0	0
11	Amadeus Asia	<i>Donor</i>	0	7,500	4,580	0	2,920
12	Comic Relief	<i>Donor</i>	9,707	49,100	56,729	0	2,078
13	Cosmoqueen	<i>Donor</i>	2,095	0	2,095	0	0
14	DanChurchAid	<i>Donor</i>	0	41,433	41,433	0	0
15	Fondation ELLE	<i>Donor</i>	0	33,638	16,662	0	16,976
16	European Union	<i>Donor</i>	-61,618	61,618	0	0	0
17	FI / Firetree Asia Foundation	<i>Donor</i>	0	150,000	64,341	0	85,659
18	FI / UNICEF Cambodia	<i>Donor</i>	0	194,335	202,573	0	-8,238
19	FI/ NCHADS / GFATM	<i>Donor</i>	141,648	48,961	187,318	0	3,292
20	Fossil Foundation	<i>Donor</i>	71,403	81,395	185,388	0	-32,590

#	FUND ACCOUNT	TYPE	OPENING	INCOME	EXPENSES	TRANSFER	CLOSING
21	Friends Deutschland (Frankfurt Opera/ JUVE Award)	<i>Donor</i>	40,071	18,514	58,586	0	0
22	Gisela Foundation	<i>Donor</i>	0	85,000	85,000	0	0
23	Fondation Juniclair	<i>Donor</i>	27,701	173,979	98,386	0	103,294
24	La Chaîne de l'Espoir	<i>Donor</i>	10,370	0	10,370	0	0
25	Riverview Children's Foundation	<i>Donor</i>	7,750	18,825	10,920	0	15,654
26	Save The Children	<i>Donor</i>	547	-547	0	0	0
27	Secours Catholique / Caritas France	<i>Donor</i>	0	51,940	51,940	0	0
28	SIPAR	<i>Donor</i>	0	8,033	8,033	0	0
29	TESCOs	<i>Donor</i>	118	0	118	0	0
30	The Australian Embassy (DFAT)	<i>Donor</i>	3,297	0	2,549	0	748
31	The Mercury Phoenix Trust	<i>Donor</i>	8,735	14,900	11,710	0	11,925
32	UNICEF Cambodia	<i>Donor</i>	0	5,000	880	0	4,120
33	Weyerhaeuser Family Foundation	<i>Donor</i>	0	25,000	25,000	0	0
34	WISE / Eric Barthelmé	<i>Donor</i>	5,465	55,451	52,803	0	8,113
35	WISE / Swiss Philanthropy Foundation	<i>Donor</i>	40,341	37,574	39,687	0	38,228
36	World Childhood Foundation	<i>Donor</i>	0	28,667	28,667	0	0
37	Land	<i>Private</i>	2,400,481	1,848	0	0	2,402,329
38	General Reserves	<i>Reserves</i>	86,132	84,214	697,743	639,905	112,508
	TOTAL		3,149,600	3,240,261	3,500,846	0	2,889,016

Friends Siem Reap

	2016	2015
Number of Staff (31 Dec)	122	130
Total Income (US\$)	1,151,443	1,170,020
Total Expenses (US\$)	1,280,731	1,234,789
Administrative Costs	2%	2%
Social Businesses	8	6



Financial Statements

Income Statement for the year ending 31 December 2016 Friends Siem Reap, Cambodia

INCOME	2016 (US\$)	2015 (US\$)
Sales	556,624	487,980
Donor Funding	476,305	574,043
<i>Earned Donor Income</i>	<i>408,202</i>	<i>523,105</i>
<i>Unearned Donor Income</i>	<i>68,103</i>	<i>50,938</i>
Private Donations	60,768	8,270
Consultancy	0	5,760
Other Income	6,672	2,188
Internal Funding	51,075	91,779
TOTAL INCOME	1,151,443	1,170,020
EXPENSES	2016 (US\$)	2015 (US\$)
PERSONNEL		
International Staff	76,750	67,427
National Staff	491,315	445,663
Health Insurance	18,878	17,697
Miscellaneous	8,500	9,672
	595,443	540,460
DIRECT COSTS		
Hygiene Costs	2,818	7,374
Medical Costs	3,641	5,582
IEC Materials	175	258
Clothing for Beneficiaries	537	1,139
Non-Formal Education materials	304	1,532
Food /Drink for Beneficiaries	45,655	52,481
Family Support	3,081	5,181
Centre Supplies	2,515	1,247
Other Activity Costs	348	622
Family Reintegration Travel	4,051	4,044
Recreational Activity Support	3,181	2,034
School Reintegration Support	3,280	12,033
Vocational Training Materials	5,635	4,629
Placement Support	16,212	22,056
ChildSafe Materials	4,457	6,821
Foster Care Families	27,651	23,831
Staff Uniforms	190	2,560
Family Income Generation Support	3,177	3,790
	126,909	157,214

EXPENSES	2016 (US\$)	2015 (US\$)
EQUIPMENT / ASSETS		
IT/ Computers	3,243	2,554
Vehicles	0	1,080
Furniture/ Fittings	2,124	1,404
Vocational Training Equipment	5,307	3,374
Miscellaneous	3,184	1,370
	13,858	9,782
INDIRECT COSTS		
Communications	6,342	6,403
Transport / Gasoline	34,094	48,469
Maintenance/Renovations	53,827	14,178
Office Supplies	4,644	6,268
Rent & Utilities	89,249	81,118
External Audits	5,520	9,689
Advertising/Marketing	5,887	5,115
Miscellaneous	10,985	11,883
	210,548	183,123
CAPACITY BUILDING / COORDINATION		
Travel Costs	526	892
Staff Training	1,759	861
Workshops/ Research/ Assessments	0	618
	2,285	2,371
OTHER BUSINESS COST		
Cost of Sales	217,441	229,621
Outlet Supplies	25,823	32,855
Franchise Fees	42,677	36,267
Staff Food costs	20,612	20,969
Business Uniforms	8,498	1,704
Miscellaneous	355	605
	315,406	322,021
PROGRAM SUPPORT		
Headquarter Support Costs	16,283	19,818
	16,283	19,818
TOTAL EXPENSES	1,280,731	1,234,789
NET INCOME	-129,288	-64,769
Retained funds b/f	55,665	120,433
EQUITY	-73,623	55,665

Statement of Financial Position as at 31 Dec 2016

Friends Siem Reap, Cambodia

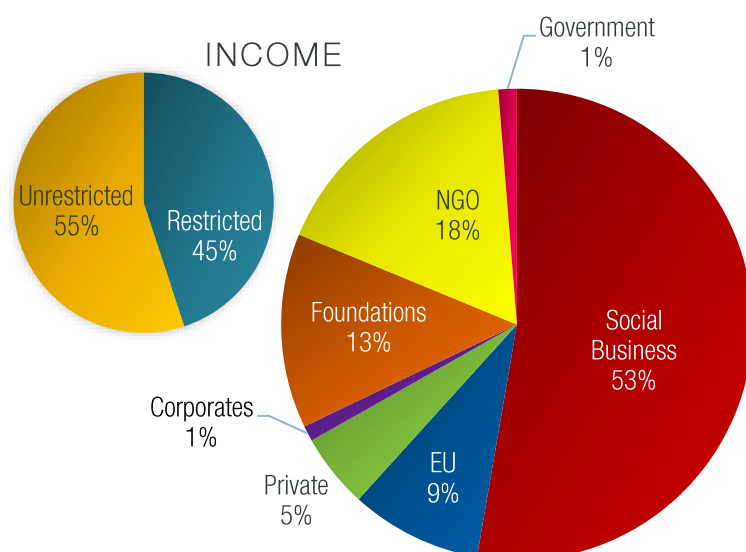
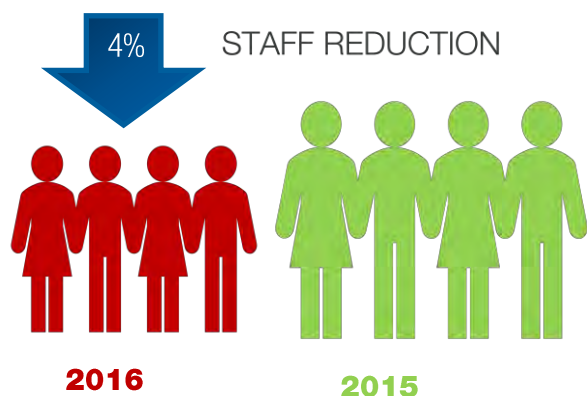
CURRENT ASSETS		2016 (US\$)	2015 (US\$)
Current Assets			
	Cash & Bank	59,250	91,229
	Project Advances	739	1,290
Accounts Receivable			
	Funding Receivables	28	25,441
	Staff Loans	900	2,050
	Guarantee Deposit	15,930	16,310
	Miscellaneous	3,963	6,621
TOTAL ASSETS		80,810	142,942
LIABILITIES			
Current Liabilities			
	Funding Payables	15,013	37
	Tax Payable	721	636
	Miscellaneous	64,709	13,121
	Withholding Tax Payable	657	150
	Program Loans	73,333	73,333
TOTAL LIABILITIES		154,433	87,277
EQUITY		-73,623	55,665

Statement of Changes in Equity as at 31 Dec 2016 - Friends Siem Reap

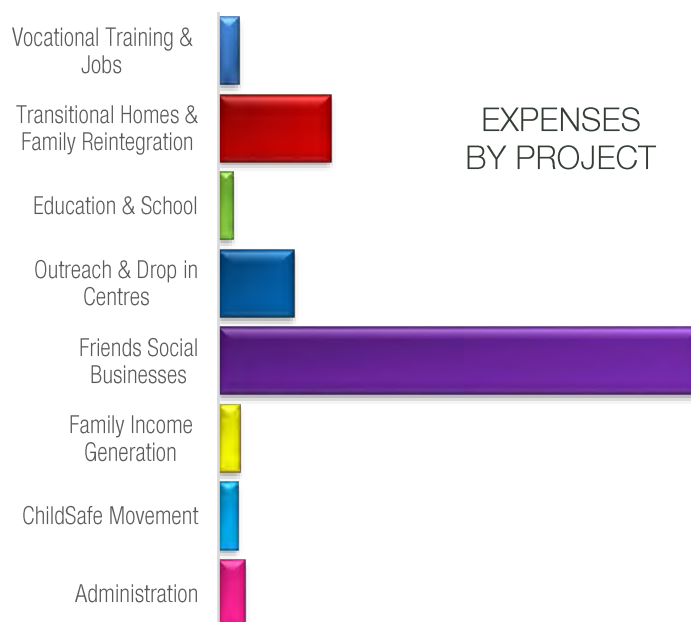
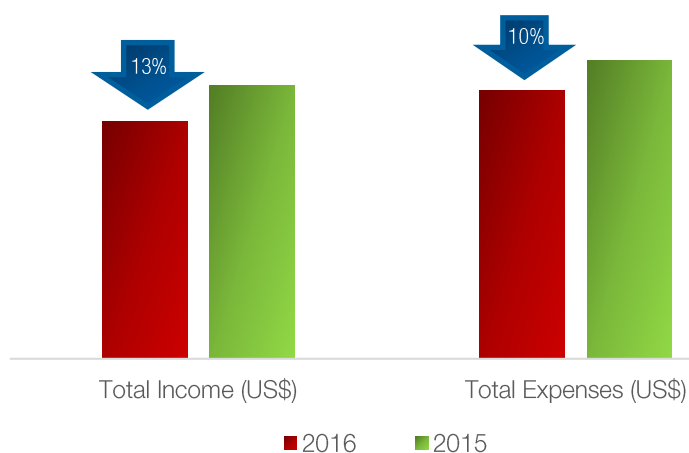
#	FUND ACCOUNT	TYPE	OPENING	INCOME	EXPENSES	TRANSFER	CLOSING
1	Nyum Nyum Restaurant	<i>Business</i>	0	2,738	2,574	-246	-81
2	Friends N Stuff Art Center	<i>Business</i>	17,817	0	0	-17,817	0
3	Friends N Stuff Central	<i>Business</i>	-51,053	40,162	52,033	45,530	-17,394
4	Friends n Stuff Marum	<i>Business</i>	29,028	69,636	32,416	-33,545	32,703
5	Marum Restaurant	<i>Business</i>	-119,365	427,267	436,926	-742	-129,766
6	Mechanics	<i>Business</i>	10,079	4,714	6,544	3,468	11,717
7	Phka Kravan	<i>Business</i>	7,125	3,529	4,061	0	6,593
8	Sewing Training	<i>Business</i>	0	2,441	6,920	4,573	94
9	Sewing Workshop	<i>Business</i>	13,598	9,597	18,383	7,952	12,763
10	Cambodia Children Support Foundation	<i>Donor</i>	0	16,637	16,637	0	0
11	CLSA Chairman's Trust	<i>Donor</i>	52,657	0	52,576	-81	0
12	Comic Relief	<i>Donor</i>	15,287	28,842	40,651	-195	3,282
13	DFAT/ DAP (AusAid)	<i>Donor</i>	7,852	0	7,792	-60	0
14	Fondation de l'Orangerie	<i>Donor</i>	0	42,543	26,051	-100	16,392
15	Fossil Foundation	<i>Donor</i>	-12,174	150,695	174,592	-1,045	-37,115
16	Friends Deutschland	<i>Donor</i>	16,529	1,400	17,834	-95	0
17	Geneva City	<i>Donor</i>	0	14,586	2,466	0	12,120
18	Gisela Foundation	<i>Donor</i>	0	20,000	20,000	0	0
19	Orr Family Foundation	<i>Donor</i>	0	50,000	10,509	-3,875	35,616
20	Paul Newfield	<i>Donor</i>	37,728	54,504	49,243	-246	42,743
21	Save The Children	<i>Donor</i>	0	10,110	11,726	-61	-1,677
22	St. Paul's Foundation	<i>Donor</i>	0	2,475	2,475	0	0
23	Terre des Hommes Netherlands / FI	<i>Donor</i>	2,397	7,595	10,067	0	-75
24	UNICEF Cambodia	<i>Donor</i>	32,414	93,600	122,604	-1,164	2,246
25	Victoria Hwang	<i>Donor</i>	-11,750	0	0	0	-11,750
26	World Childhood Foundation	<i>Donor</i>	0	37,823	37,823	0	0
27	Intrepid Foundation	<i>Private</i>	0	1,515	1,515	0	0
28	General Reserves	<i>Reserves</i>	7,495	59,036	116,313	-2,251	-52,033
	TOTAL		55,665	1,151,443	1,280,731	0	-73,623

Friends Laos

	2016	2015
Number of Staff (31 Dec)	77	80
Total Income (US\$)	798,054	918,914
Total Expenses (US\$)	899,899	1,000,944
Administrative Costs	3%	3%
Social Businesses	6	6



INCOME & EXPENSE REDUCTION



Financial Statements

Income Statement for the year ending 31 Dec 2016 Friends Vientiane & Luang Prabang, Laos

INCOME	2016 (US\$)	2015 (US\$)	2016 (₭P)	2015 (₭P)
Sales Revenue	283,097	303,214	2,264,772,000	2,425,710,299
Donor Funding	354,867	408,473	2,838,932,456	3,267,783,648
<i>Earned Donor Income</i>	<i>338,556</i>	<i>371,698</i>	<i>2,708,449,634</i>	<i>2,973,583,034</i>
<i>Unearned Donor Income</i>	<i>16,310</i>	<i>36,775</i>	<i>130,482,821</i>	<i>294,200,614</i>
Private Donations	151,789	142,847	1,214,315,429	1,142,773,358
Consultancy	0	0	0	0
Other Income	801	603	6,411,583	4,823,082
Internal Funding	7,500	63,778	60,000,000	510,221,550
TOTAL INCOME	798,054	918,914	6,384,431,467	7,351,311,936
EXPENSES	2016 (US\$)	2015 (US\$)	2016 (₭P)	2015 (₭P)
PERSONNEL				
International Staff	24,233	25,819	193,866,591	206,554,135
National Staff	367,789	337,930	2,942,313,116	2,703,441,139
Health Insurance	11,873	12,132	94,987,130	97,053,497
Miscellaneous	10,218	12,970	81,746,804	103,756,507
	414,114	388,851	3,312,913,641	3,110,805,278
DIRECT COSTS				
Hygiene costs	4,013	5,059	32,103,500	40,474,000
Medical costs	8,368	8,354	66,945,000	66,834,000
IEC Material	201	764	1,605,000	6,112,000
Clothing for Beneficiaries	2,550	1,709	20,399,000	13,669,000
Non-Formal Education materials	371	803	2,964,000	6,421,000
Food/Drink for Beneficiaries	44,849	43,736	358,791,500	349,885,500
Family/Support	2,612	4,658	20,896,000	37,264,500
Centre Supplies	5,836	9,773	46,690,000	78,180,000
Other Activity Costs	1,565	8,115	12,517,500	61,921,500
Family Reintegration Travel	2,437	6,779	19,495,000	54,231,000
Recreational Activity Support	2,330	3,794	18,642,000	30,354,500
School Reintegration Support	10,439	11,189	83,514,000	89,512,000
Vocational Training Materials	2,287	4,411	18,297,000	35,284,101
Placement Support	2,701	2,581	21,611,000	20,651,000
ChildSafe Materials	960	5,342	7,681,000	42,736,000
Foster Care Families	563	208	4,500,000	1,665,000
Staff Uniforms	0	5,656	0	45,250,000
Family Income Generation Support	1,036	1,600	8,290,000	12,797,000
	93,118	124,530	744,941,500	996,242,101

EXPENSES	2016 (US\$)	2015 (US\$)	2016 (KIP)	2015 (KIP)
EQUIPMENT / ASSETS				
IT /Computers	2,474	2,519	19,790,000	20,150,000
Furniture/ Fittings	954	8,737	7,635,000	69,895,500
Vocational Training Equipment	1,060	7,380	8,480,000	59,041,500
Miscellaneous	548	4,181	4,382,000	33,451,500
	5,036	22,817	40,287,000	182,538,500
INDIRECT COSTS				
Communications	6,056	10,108	48,451,000	80,864,500
Transport / Gasoline	9,119	11,596	72,952,000	92,765,000
Maintenance/Renovations	10,038	13,003	80,303,500	104,025,000
Office Supplies	2,203	4,079	17,621,500	32,632,000
Rent & Utilities	75,983	65,294	607,862,548	522,353,400
External Audits	4,566	12,001	36,527,625	96,007,605
Advertising/Marketing	190	2,265	1,519,400	18,123,600
Miscellaneous	14,212	16,155	113,698,676	129,243,206
	122,367	134,502	978,936,249	1,076,014,311
CAPACITY BUILDING / COORDINATION				
Travel Costs	5,839	7,197	46,713,187	57,573,747
Staff Training	731	1,856	5,844,500	14,846,500
Workshops/ Research/ Assessments	1,415	2,236	11,318,000	17,888,000
	7,984	11,289	63,875,687	90,308,247
OTHER BUSINESS COST				
Cost of Sales	156,790	205,603	1,254,318,114	1,644,820,079
Outlet Supplies	20,372	29,192	162,974,500	233,536,793
Franchise Fees	31,888	25,178	255,103,900	201,422,018
Staff Food costs	22,670	22,322	181,360,436	178,573,000
Business Uniforms	7,677	8,882	61,416,000	71,054,500
Miscellaneous	1,026	2,138	8,210,971	17,104,880
	240,423	293,314	1,923,383,921	2,346,511,270
PROGRAM SUPPORT				
Headquarter Support Costs	16,857	25,642	134,852,815	205,132,464
	16,857	25,642	134,852,815	205,132,464
TOTAL EXPENSES	899,899	1,000,944	7,199,190,813	8,007,552,172
NET INCOME	-101,845	-82,030	-814,759,346	-656,240,236
Retained funds b/f	81,823	163,853	654,580,528	1,310,820,764
EQUITY	-20,022	81,823	-160,178,818	654,580,528

Statement of Financial Position as at 31 Dec 2016

Friends Vientiane & Luang Prabang, Laos

CURRENT ASSETS		2016 (US\$)	2015 (US\$)	2016 (₭P)	2015 (₭P)
Current Assets					
	Cash & Bank	65,443	104,434	523,543,674	835,472,179
	Prepayments	35,700	76,110	285,600,000	608,880,000
Accounts Receivable					
	Funding Receivables	680	22,962	5,436,837	183,697,358
	Business Receivables	9,195	47,821	73,557,772	382,570,292
	Staff Loans	563	19	4,500,000	150,000
	Miscellaneous	3,581	6,363	28,644,480	50,900,556
TOTAL ASSETS		115,160	257,709	921,282,763	2,061,670,385
LIABILITIES					
Current Liabilities					
	Funding Payables	10,243	25,817	81,943,018	206,537,564
	Business Payables	25,390	44,451	203,116,052	355,606,119
	Miscellaneous	5,008	11,076	40,067,832	88,611,495
	Program Loans	94,542	94,542	756,334,679	756,334,679
TOTAL LIABILITIES		135,183	175,886	1,081,461,581	1,407,089,857
EQUITY		-20,022	81,823	-160,178,818	654,580,528

Statement of Changes in Equity as at 31 Dec 2016

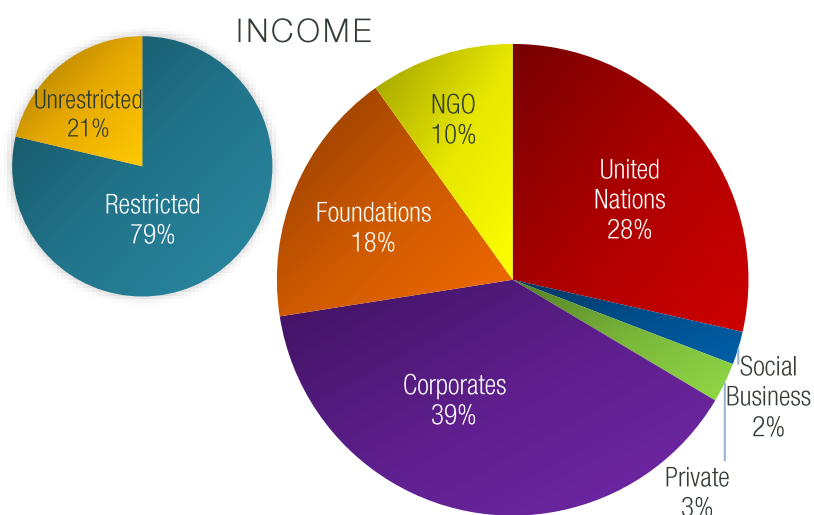
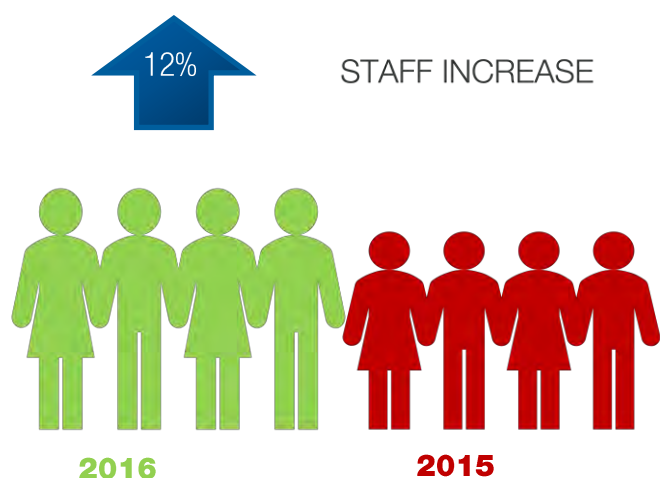
Friends Vientiane & Luang Prabang, Laos

#	FUND ACCOUNT	TYPE	OPENING (KIP)	INCOME (KIP)	EXPENSES(KIP)	TRANSFER (KIP)	CLOSING (KIP)
1	Friends N Stuff Khaiphaen	<i>Business</i>	-37,982,340	38,900,000	37,212,714	0	-36,295,054
2	Friends N Stuff Makphet	<i>Business</i>	32,372,811	149,278,988	203,301,267	-3,650,000	-25,299,467
3	Khaiphaen Restaurant	<i>Business</i>	359,429,774	1,097,564,510	1,254,969,869	-1,100,000	200,924,414
4	From Honeybees to Pepperwood	<i>Business</i>	153,050,505	64,364,000	37,254,416	-284,000	179,876,089
5	Makphet Restaurant	<i>Business</i>	-336,964,741	1,998,096,383	2,320,088,595	4,484,000	-654,472,953
6	Mechanics Vocational Training	<i>Business</i>	-69,034,388	17,196,000	99,927,721	24,084,000	-127,682,109
7	Aide et Action	<i>Donor</i>	0	403,415,140	400,200,191	-3,214,949	0
8	Caritas Australia	<i>Donor</i>	128,612,805	571,524,373	681,033,605	-3,365,027	15,738,546
9	European Union	<i>Donor</i>	460,649,298	574,820,911	664,165,827	-6,504,000	364,800,381
10	Friends France	<i>Donor</i>	0	132,877,203	83,135,925	-2,070,000	47,671,278
11	Spellbrook Foundation	<i>Donor</i>	0	244,339,606	40,758,875	0	203,580,731
12	Gisela Foundation	<i>Donor</i>	5,270,108	121,425,000	124,280,503	-2,414,606	0
13	The Kadoorie Charitable Foundation	<i>Donor</i>	-119,638,356	597,817,971	546,603,076	-3,800,000	-72,223,461
14	Save the Children	<i>Donor</i>	0	18,929,091	20,113,618	-235,000	-1,419,527
15	Small Steps Project	<i>Donor</i>	0	123,428,526	122,313,513	-1,115,013	0
16	US Embassy	<i>Donor</i>	55,159,555	80,820,000	135,353,733	-625,822	0
17	Amadeus Asia	<i>Private</i>	3,477,000	0	1,555,000	0	1,922,000
18	General Reserves	<i>Private</i>	20,178,497	81,503,630	364,230,684	419	-262,548,138
19	Intrepid Foundation	<i>Private</i>	0	12,274,635	12,084,633	-190,003	0
20	Travel Indochina	<i>Private</i>	0	55,855,500	50,607,048	0	5,248,453
	TOTAL		654,580,528	6,384,431,467	7,199,190,813	0	-160,178,818

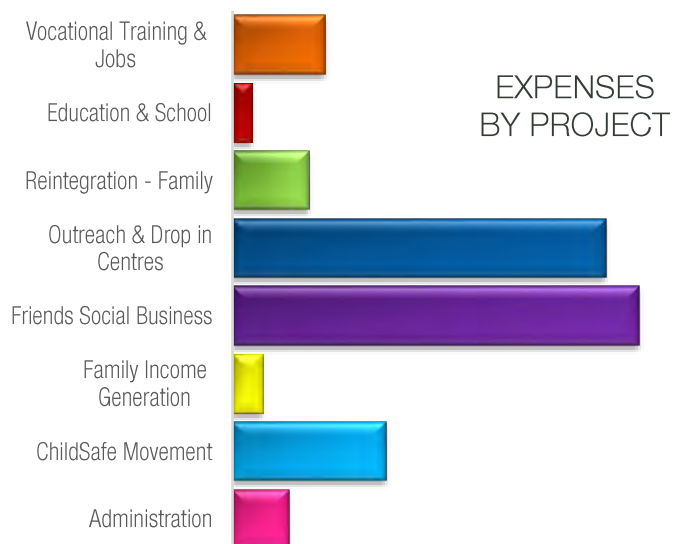
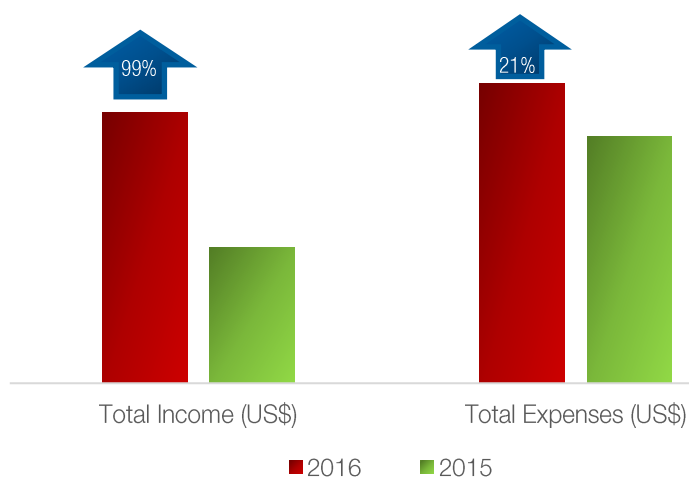
#	FUND ACCOUNT	TYPE	OPENING (US\$)	INCOME (US\$)	EXPENSES (US\$)	TRANSFER (US\$)	CLOSING (US\$)
1	Friends N Stuff Khaiphaen	<i>Business</i>	-4,748	4,863	4,652	0	-4,537
2	Friends N Stuff Makphet	<i>Business</i>	4,047	18,660	25,413	-456	-3,162
3	Khaiphaen Restaurant	<i>Business</i>	44,929	137,196	156,871	-138	25,116
4	From Honeybees to Pepperwood	<i>Business</i>	19,131	8,046	4,657	-36	22,485
5	Makphet Restaurant	<i>Business</i>	-42,121	249,762	290,011	561	-81,809
6	Mechanics Vocational Training	<i>Business</i>	-8,629	2,150	12,491	3,011	-15,960
7	Aide et Action	<i>Donor</i>	0	50,427	50,025	-402	0
8	Caritas Australia	<i>Donor</i>	16,077	71,441	85,129	-421	1,967
9	European Union	<i>Donor</i>	57,581	71,853	83,021	-813	45,600
10	Friends France	<i>Donor</i>	0	16,610	10,392	-259	5,959
11	Spellbrook Foundation	<i>Donor</i>	0	30,542	5,095	0	25,448
12	Gisela Foundation	<i>Donor</i>	659	15,178	15,535	-302	0
13	The Kadoorie Charitable Foundation	<i>Donor</i>	-14,955	74,727	68,325	-475	-9,028
14	Save the Children	<i>Donor</i>	0	2,366	2,514	-29	-177
15	Small Steps Project	<i>Donor</i>	0	15,429	15,289	-139	0
16	US Embassy	<i>Donor</i>	6,895	10,103	16,919	-78	0
17	Amadeus Asia	<i>Private</i>	435	0	194	0	240
18	General Reserves	<i>Private</i>	2,522	10,188	45,529	0	-32,819
19	Intrepid Foundation	<i>Private</i>	0	1,534	1,511	-24	0
20	Travel Indochina	<i>Private</i>	0	6,982	6,326	0	656
	TOTAL		81,823	798,054	899,899	0	-20,022

Friends Thailand

	2016	2015
Number of Staff (31 Dec)	29	26
Total Income (US\$)	529,999	265,785
Total Expenses (US\$)	586,665	483,098
Administrative Costs	5%	7%
Social Businesses	1	2



INCOME & EXPENSE REDUCTION



Financial Statements

Income Statement for the year ending 31 Dec 2016 Friends Bangkok & Aranyaprathet, Thailand

INCOME	2016 (US\$)	2015 (US\$)	2016 (TH฿)	2015 (TH฿)
Sales Revenue	12,059	16,113	422,064	563,959
Donor Funding	503,461	215,946	17,621,142	7,558,125
<i>Earned Donor Income</i>	<i>460,097</i>	<i>190,251</i>	<i>16,103,408</i>	<i>6,658,798</i>
<i>Unearned Donor Income</i>	<i>43,364</i>	<i>25,695</i>	<i>1,517,734</i>	<i>899,328</i>
Private Donations	2,739	23,523	95,874	823,321
Consultancy	9,905	357	346,665	12,488
Other Income	1,835	929	64,219	32,530
Internal Funding	0	8,916	0	312,056
TOTAL INCOME	529,999	265,785	18,549,964	9,302,479
EXPENSES	2016 (US\$)	2015 (US\$)	2016 (TH฿)	2015 (TH฿)
PERSONNEL				
International Staff	24,000	27,011	840,000	945,393
National Staff	232,909	198,102	8,151,813	6,933,560
Health Insurance	6,397	5,673	223,899	198,539
Overtime	5,678	5,623	198,725	196,790
Miscellaneous	14,063	8,633	492,210	302,148
	283,047	245,041	9,906,647	8,576,431
DIRECT COSTS				
Hygiene costs	755	1,319	26,409	46,176
Medical costs	1,479	1,812	51,766	63,404
IEC Material	161	3,143	5,618	110,020
Non-Formal Education materials	358	845	12,528	29,579
Food/Drink for Beneficiaries	959	2,033	33,562	71,161
Family/Support	1,599	437	55,952	15,285
Centre Supplies	768	260	26,880	9,098
Other Activity Costs	1,935	1,199	67,739	41,973
Family Reintegration Travel	506	2,565	17,715	89,774
Recreational Activity Support	179	698	6,275	24,413
Outreach Materials	545	1,594	19,075	55,789
School Reintegration Support	7,246	6,831	253,593	239,092
Vocational Training Materials	1,909	636	66,823	22,256
Placement Support	1,180	1,496	41,287	52,353
ChildSafe Materials	24,493	21,937	857,263	767,800
Family Income Generation Support	3,770	5,272	131,936	184,512
	47,841	52,077	1,674,419	1,822,684

EXPENSES	2016 (US\$)	2015 (US\$)	2016 (TH฿)	2015 (TH฿)
EQUIPMENT / ASSETS				
IT/Computers	931	3,904	32,570	136,630
Furniture / Fittings	401	109	14,045	3,800
Vocational Training Equipment	12,779	0	447,251	0
Miscellaneous	1,322	918	46,258	32,118
	15,432	4,930	540,124	172,548
INDIRECT COSTS				
Communications	4,187	4,098	146,550	143,415
Transport / Gasoline	13,646	11,336	477,596	396,754
Maintenance/Renovations	70,316	34,423	2,461,070	1,204,819
Office Supplies	4,021	4,034	140,740	141,173
Rent & Utilities	64,090	59,397	2,243,143	2,078,887
External Audits	5,286	4,286	185,000	150,000
Advertising/Marketing	903	659	31,608	23,071
Miscellaneous	2,634	4,556	92,192	159,443
	165,083	122,787	5,777,899	4,297,560
CAPACITY BUILDING / COORDINATION				
Travel Costs	9,304	10,922	325,639	382,257
Staff Training	1,443	1,704	50,496	59,637
Workshops/ Research/ Assessments	29,302	22,642	1,025,570	792,461
	40,049	35,267	1,401,705	1,234,354
OTHER BUSINESS COST				
Cost of Sales	3,870	12,572	135,456	440,021
Outlet Supplies	787	286	27,532	10,001
Staff Food costs	713	0	24,964	0
Business Uniforms	844	9	29,549	305
Miscellaneous	2,400	247	83,985	8,639
	8,614	13,113	301,486	458,967
PROGRAM SUPPORT				
Headquarter Support Costs	26,600	9,883	931,010	345,888
	26,600	9,883	931,010	345,888
TOTAL EXPENSES	586,665	483,098	20,533,290	16,908,433
NET INCOME	-56,666	-217,313	-1,983,325	-7,605,954
Retained funds b/f	146,568	363,881	5,129,879	12,735,832
EQUITY	89,902	146,568	3,146,554	5,129,878

Statement of Financial Position as at 31 Dec 2016

Friends Bangkok & Aranyaprathet, Thailand

CURRENT ASSETS		2016 (US\$)	2015 (US\$)	2016 (TH฿)	2015 (TH฿)
Current Assets					
	Cash & Bank	87,121	145,797	3,049,247	5,102,887
	Project Advances	872	273	30,516	9,544
Accounts Receivable					
	Funding Receivables	0	10,116	0	354,044
	Business Receivables	435	1,985	15,223	69,475
	Guarantee Deposits	12,706	13,149	444,700	460,200
	Miscellaneous	50	550	1,747	19,249
TOTAL ASSETS		101,184	171,869	3,541,433	6,015,399
LIABILITIES					
Current Liabilities					
	Funding Payables	9,252	18,637	323,809	652,299
	Business Payables	3	4,964	106	173,752
	Tax Payable	613	301	21,442	10,527
	Miscellaneous	93	0	3,246	0
	Withholding Tax	226	581	7,926	20,342
	Social Security Payable	1,096	817	38,350	28,600
TOTAL LIABILITIES		11,282	25,301	394,879	885,520
EQUITY		89,902	146,568	3,146,554	5,129,879

Statement of Changes in Equity as at 31 Dec 2016

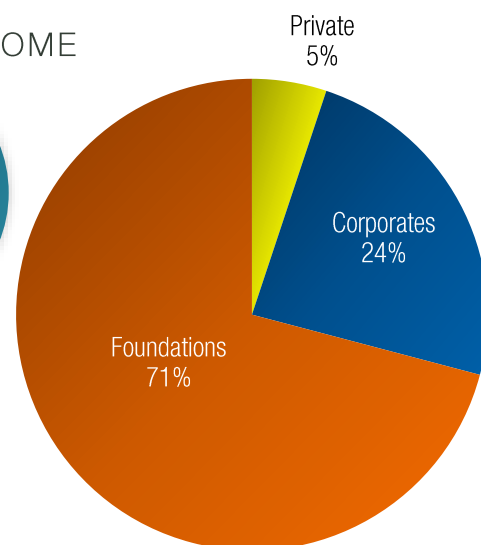
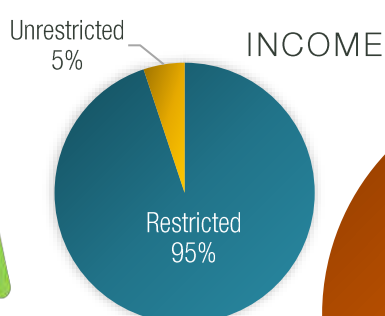
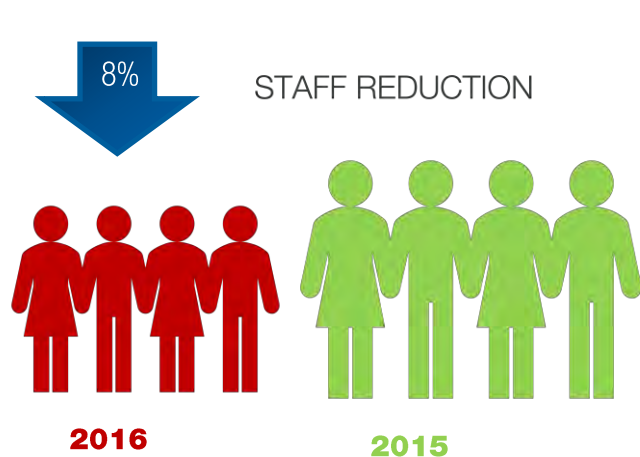
Friends Bangkok & Aranyaprathet, Thailand

#	FUND ACCOUNT	TYPE	OPENING (฿)	INCOME (฿)	EXPENSE (฿)	CLOSING (฿)
1	Friends n Stuff Sukhumvit Soi 49	<i>Business</i>	52,293	418,654	648,534	-177,587
2	Friends n Stuff Phra Athit	<i>Business</i>	-191,643	3,410	10,717	-198,950
3	Friends n Stuff Aranyaprathet	<i>Business</i>	-43,153	0	0	-43,153
4	ANZ Women's Group	<i>Donor</i>	100,580	0	5,736	94,844
5	Bank of America Merrill Lynch / Charities Aid Foundation	<i>Donor</i>	0	2,626,970	2,442,511	184,459
6	Damnok Toek / Child Support Network	<i>Donor</i>	0	80,788	51,705	29,083
7	Deutsche Bank	<i>Donor</i>	441,125	750,200	132,408	1,058,917
8	EPIC Foundation	<i>Donor</i>	0	2,110,737	1,923,968	186,768
9	FACE	<i>Donor</i>	103,359	65,000	168,359	0
10	FI Switzerland (Kuoni)	<i>Donor</i>	27,343	0	27,343	0
11	Fondation De l'Orangerie	<i>Donor</i>	520,958	891,704	1,189,904	222,758
12	Gisela Foundation	<i>Donor</i>	121,694	325,000	203,455	243,239
13	IKANO	<i>Donor</i>	3,237,338		2,614,615	622,724
14	Intermarché / Friends France	<i>Donor</i>	0	382,700	168,421	214,279
15	Terre des Hommes Netherlands / FI	<i>Donor</i>	-28,714	1,685,548	1,656,834	0
16	TSA Solutions	<i>Donor</i>	0	2,042,890	2,042,890	0
17	UNICEF Thailand	<i>Donor</i>	22,434	5,295,482	5,208,777	108,991
18	VISA	<i>Donor</i>	122,765	532,800	497,047	158,518
19	WISE / Race of Champions	<i>Donor</i>	152,839	0	152,839	0
20	World Childhood Foundation	<i>Donor</i>	329,871	831,323	818,614	342,580
21	General Reserves	<i>Private</i>	160,789	506,758	568,613	99,082
	FUND BALANCE		5,129,879	18,549,964	20,533,290	3,146,554

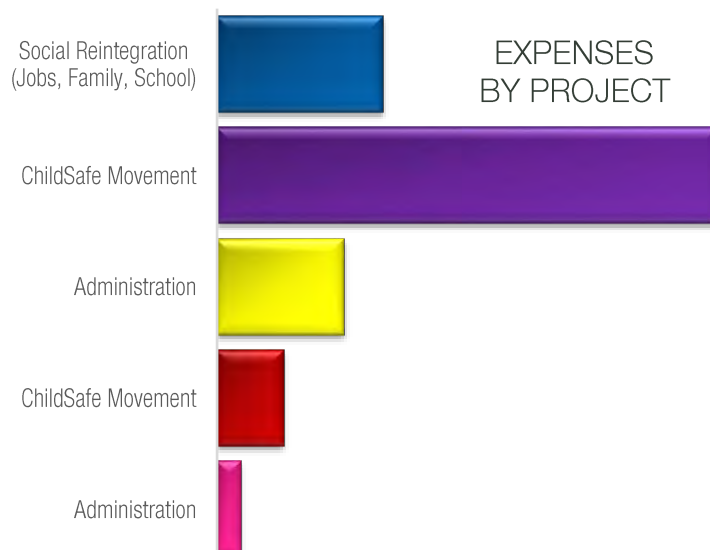
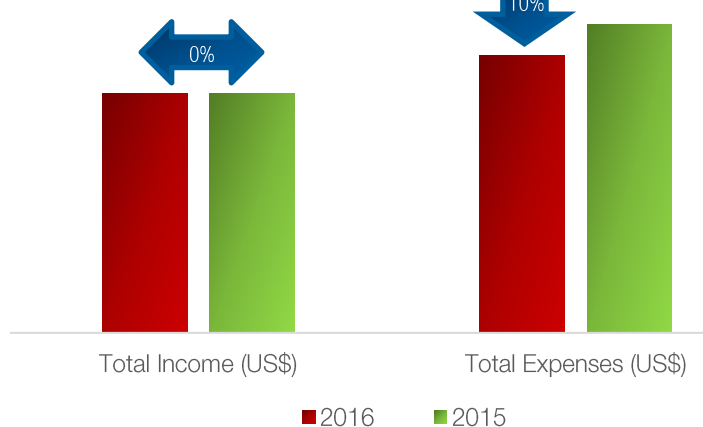
#	FUND ACCOUNT	TYPE	OPENING (\$)	INCOME (\$)	EXPENSE (\$)	CLOSING (\$)
1	Friends n Stuff Sukhumvit Soi 49	<i>Business</i>	1,494	11,962	18,530	-5,074
2	Friends n Stuff Phra Athit	<i>Business</i>	-5,476	97	306	-5,684
3	Friends n Stuff Aranyaprathet	<i>Business</i>	-1,233	0	0	-1,233
4	ANZ Women's Group	<i>Donor</i>	2,874	0	164	2,710
5	Bank of America Merrill Lynch / Charities Aid Foundation	<i>Donor</i>	0	75,056	69,786	5,270
6	Damnok Toek / Child Support Network	<i>Donor</i>	0	2,308	1,477	831
7	Deutsche Bank	<i>Donor</i>	12,604	21,434	3,783	30,255
8	EPIC Foundation	<i>Donor</i>	0	60,307	54,971	5,336
9	FACE	<i>Donor</i>	2,953	1,857	4,810	0
10	FI Switzerland (Kuoni)	<i>Donor</i>	781	0	781	0
11	Fondation De l'Orangerie	<i>Donor</i>	14,885	25,477	33,997	6,365
12	Gisela Foundation	<i>Donor</i>	3,477	9,286	5,813	6,950
13	IKANO	<i>Donor</i>	92,495	0	74,703	17,792
14	Intermarché / Friends France	<i>Donor</i>	0	10,934	4,812	6,122
15	Terre des Hommes Netherlands / FI	<i>Donor</i>	-820	48,159	47,338	0
16	TSA Solutions	<i>Donor</i>	0	58,368	58,368	0
17	UNICEF Thailand	<i>Donor</i>	641	151,299	148,822	3,114
18	VISA	<i>Donor</i>	3,508	15,223	14,201	4,529
19	WISE / Race of Champions	<i>Donor</i>	4,367	0	4,367	0
20	World Childhood Foundation	<i>Donor</i>	9,425	23,752	23,389	9,788
21	General Reserves	<i>Private</i>	4,594	14,479	16,246	2,831
	FUND BALANCE		146,568	529,999	586,665	89,902

Friends Indonesia

	2016	2015
Number of Staff (31 Dec)	11	12
Total Income (US\$)	106,961	107,001
Total Expenses (US\$)	124,051	138,176
Administrative Costs	3%	5%
Social Businesses	0	0



INCOME & EXPENSE REDUCTION



Financial Statements

Income Statement for the year ending 31 Dec 2016 Friends Jakarta, Indonesia

INCOME	2016 (US\$)	2015 (US\$)	2016 (IDR)	2015 (IDR)
Donor Funding	101,495	94,677	1,319,432,928	1,230,800,175
<i>Earned Donor Income</i>	<i>79,441</i>	<i>58,511</i>	<i>1,032,728,822</i>	<i>760,641,672</i>
<i>Unearned Donor Income</i>	<i>22,054</i>	<i>36,166</i>	<i>286,704,106</i>	<i>470,158,503</i>
Private Donations	5,000	8,218	65,000,000	106,838,458
Other Income	466	598	6,061,860	7,775,517
Internal Funding	0	3,507	0	45,595,440
TOTAL INCOME	106,961	107,001	1,390,494,788	1,391,009,590
EXPENSES	2016 (US\$)	2015 (US\$)	2016 (IDR)	2015 (IDR)
PERSONNEL				
Staff Salaries	51,520	53,107	669,764,400	690,389,454
Health Insurance	2,964	3,929	38,533,237	51,071,661
Miscellaneous	407	114	5,296,700	1,485,000
	54,892	57,150	713,594,338	742,946,115
DIRECT COSTS				
Hygiene costs	161	166	2,088,125	2,163,391
Medical costs	586	1,763	7,614,350	22,920,785
IEC Material	272	65	3,536,100	840,000
Clothing for Beneficiaries	62	20	800,000	264,900
Food/Drink for Beneficiaries	2,767	1,350	35,971,650	17,549,870
Family Support	151	237	1,968,400	3,076,240
Other Activity Costs	1,276	1,039	16,499,300	13,509,050
Family Reintegration Travel	600	1,068	7,794,000	13,877,500
Recreational Activity Support	249	122	3,234,375	1,584,000
Outreach Materials	266	497	3,457,100	6,462,500
School Reintegration Support	247	1,718	3,210,000	22,340,200
Vocational Training Support	938	481	12,195,000	6,255,000
Placement Support	2,817	592	36,615,100	7,701,600
ChildSafe Materials	195	192	2,540,700	2,502,430
Staff Uniforms	558	155	7,250,000	2,010,000
Family Income Generation Support	2,969	2,259	38,593,800	29,365,250
	14,113	11,725	183,468,000	152,422,716
EQUIPMENT / ASSETS				
IT/Computers	1,432	986	18,620,000	12,820,000
Furniture / Fittings	223	0	2,899,000	0
Miscellaneous	90	199	1,174,000	2,590,000
	1,746	1,185	22,693,000	15,410,000

EXPENSES	2016 (US\$)	2015 (US\$)	2016 (IDR)	2015 (IDR)
INDIRECT COSTS				
Communications	1,694	1,724	22,021,682	22,410,071
Transport/Gasoline	3,123	2,782	40,603,300	36,171,900
Maintenance/Renovations	3,779	1,850	49,127,350	24,047,200
Office Supplies	2,677	2,094	34,798,310	27,221,568
Rent & Utilities	11,836	8,740	153,862,700	113,623,033
External Audits	2,393	2,398	31,104,680	31,177,200
Miscellaneous	618	1,696	8,032,056	22,052,812
	26,119	21,285	339,550,077	276,703,784
CAPACITY BUILDING / COORDINATION				
Travel Costs	4,531	6,773	58,904,660	88,048,767
Staff Training	38	0	498,000	
BoD/Adcom Meeting	2,003	0	26,036,510	
	2,041	0	26,534,510	0
PROGRAM SUPPORT				
Headquarter Support Costs	20,609	35,383	267,919,546	459,974,469
	20,609	35,383	267,919,546	459,974,469
TOTAL EXPENSES	124,051	138,176	1,612,664,132	1,796,284,503
NET INCOME	-17,090	-31,175	-222,169,344	-405,274,913
Retained funds b/f	21,631	52,806	281,198,606	686,473,518
EQUITY	4,541	21,631	59,029,262	281,198,605

Statement of Financial Position as at 31 Dec 2016

Friends Jakarta, Indonesia

CURRENT ASSETS		2016 (US\$)	2015 (US\$)	2016 (IDR)	2015 (IDR)
Current Assets					
	Cash & Bank	20,474	19,764	266,161,828	256,936,843
	Project Advances	867	1,363	11,266,000	17,720,000
Accounts Receivable					
	Funding Receivables	0	92	0	1,200,000
	Staff Loan Receivables	2,520	673	32,764,000	8,749,400
	Guarantee Deposits	0	231	0	3,000,000
TOTAL ASSETS		23,861	22,124	310,191,828	287,606,243
LIABILITIES					
Current Liabilities					
	Funding Payables	19,055	126	247,718,086	1,635,630
	Tax Payable	0	77	0	1,003,898
	Social Security Payable	0	290	0	3,768,109
	Miscellaneous	265	0	3,444,480	0
TOTAL LIABILITIES		19,320	493	251,162,566	6,407,637
EQUITY		4,541	21,631	59,029,262	281,198,606

Statement Changes in Equity as at 31 Dec 2016

Friends Jakarta, Indonesia

#	FUND ACCOUNT	TYPE	OPENING (IDR)	INCOME (IDR)	EXPENSES (IDR)	CLOSING (IDR)
1	General Reserves	<i>Private</i>	3,329,559	71,061,860	112	74,391,307
2	Skoll Challenge	<i>Private</i>	25,490,386	0	10,591,426	14,898,960
3	The Hongkong & Shanghai Banking Corporation Limited (HSBC)	<i>Donor</i>	118,604,758	0	118,604,758	0
4	Symphasis Foundation	<i>Donor</i>	-217,779,842	985,732,928	699,028,822	68,924,264
5	Friends Switzerland / Geneva Canton	<i>Donor</i>	117,589,368	0	117,589,368	0
6	Friends Switzerland / SGS	<i>Donor</i>	0	333,700,000	432,885,269	-99,185,269
7	PT. Gunung Sewu Kencana	<i>Donor</i>	233,964,377	0	233,964,377	0
	TOTAL		281,198,605	1,390,494,788	1,612,664,132	59,029,262

#	FUND ACCOUNT	TYPE	OPENING (US\$)	INCOME (US\$)	EXPENSES (US\$)	CLOSING (US\$)
1	General Reserves	<i>Private</i>	256	5,466	0	5,722
2	Skoll Challenge	<i>Private</i>	1,961	0	815	1,146
3	The Hongkong & Shanghai Banking Corporation Limited (HSBC)	<i>Donor</i>	9,123	0	9,123	0
4	Symphasis Foundation	<i>Donor</i>	-16,752	75,826	53,771	5,302
5	Friends Switzerland / Geneva Canton	<i>Donor</i>	9,045	0	9,045	0
6	Friends Switzerland / SGS	<i>Donor</i>	0	25,669	33,299	-7,630
7	PT. Gunung Sewu Kencana	<i>Donor</i>	17,997	0	17,997	0
	TOTAL		21,613	106,961	124,051	4,541

Annual Budget 2017

	HQ & Friends Phnom Penh	Mith Samlanh	Friends Siem Reap	Friends Thailand	Friends Laos	Friends Indonesia	GRAND TOTAL [post- eliminations]	%
Outreach & Drop in Centres	\$45,000	\$442,000	\$62,000	\$131,000	\$65,000	\$30,000	\$775,000	11%
Transitional Homes & Family Reintegration	\$60,000	\$245,000	\$152,000	\$0	\$151,000	\$1,000	\$609,000	9%
Education & School Reintegration	\$5,000	\$180,000	\$72,000	\$0	\$30,000	\$1,000	\$288,000	4%
Vocational Training & Employment	\$40,000	\$270,000	\$241,000	\$106,000	\$227,000	\$10,000	\$894,000	13%
ChildSafe Movement	\$120,000	\$0	\$52,000	\$100,000	\$17,000	\$10,000	\$299,000	4%
Safe Migration	\$0	\$0	\$0	\$100,000	\$0	\$0	\$100,000	1%
Social Business	\$475,000	\$1,540,000	\$600,000	\$40,000	\$300,000	\$0	\$2,615,000	37%
Core Program Costs	\$400,000	\$183,000	\$49,500	\$57,000	\$59,000	\$70,000	\$615,500	9%
Communications	\$70,000	\$0	\$0	\$0	\$0	\$0	\$70,000	1%
Grants & Fundraising	\$85,000	\$0	\$0	\$0	\$0	\$0	\$85,000	1%
Administration	\$120,000	\$112,000	\$40,000	\$24,000	\$33,000	\$6,000	\$335,000	5%
ChildSafe Alliance & Sub-grants	\$1,175,000	\$0	\$0	\$0	\$0	\$0	\$402,300	6%
GRAND TOTAL	\$2,595,000	\$2,972,000	\$1,268,500	\$558,000	\$882,000	\$128,000	\$7,087,800	100%